



JİNEKOLOJİK ENDOSKOPİ PLATFORMU



Video Anatomi

Dr. Nasuh Utku Doğan

Akdeniz Üniversitesi Tıp Fakültesi

**6. MİNİMAL İNVAZİV
JİNEKOLOJİK CERRAHİ KONGRESİ**

21-24 Haziran 2023

ACIBADEM ÜNİVERSİTESİ KONGRE MERKEZİ, ATAŞEHİR - İSTANBUL

HİSTEREKTOMİ KURSU

Why do complications occur?

- Poor knowledge of anatomy
- Distractions
- being above one's limits of expertise
- inadequate preparation for a case
- Overconfidence
- being in the learning curve of new technology or surgical technique
- not knowing how to properly use an instrument
- being in a rush
- inadequate or inappropriate tissue dissection
- inability to recognize different tissues or structures

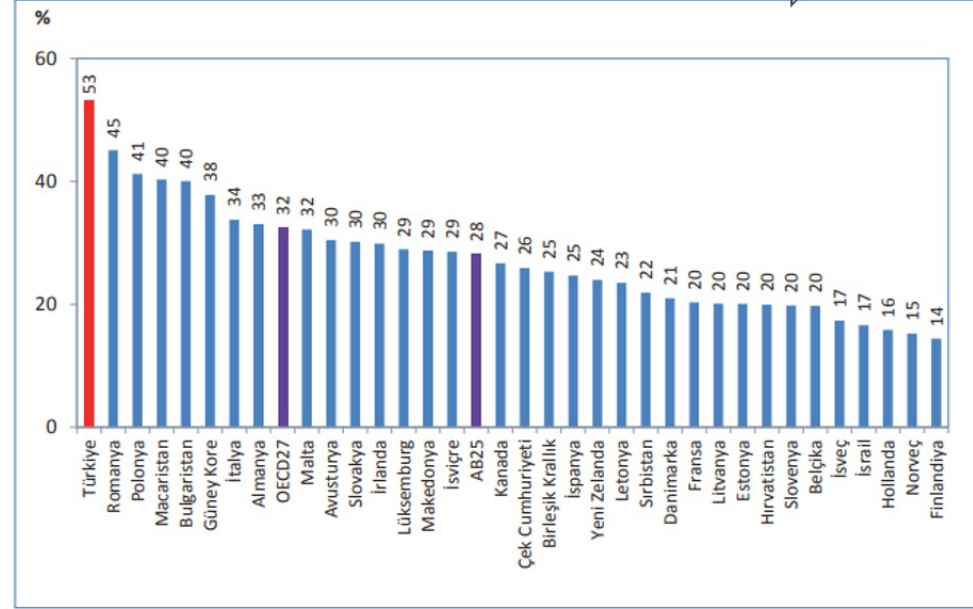
If you want to avoid injuries, avoid what is listed above.

Tablo 5.2. Yıllara Göre Ana Çocuk Sağlığı ve Aile Planlaması Göstergeleri

	2002	2014	2015	2016	2017
Sağlık Kuruluşlarında Gerçekleşen Doğum Oranı, (%)	75	98	99	98	98
Antenatal Bakım Kapsamı (En Az Bir Ziyaret), (%)	70,0	96,9	98,0	98,5	99,7
Sezaryen Doğumların Tüm Doğumlar İçindeki Payı, (%)	21,0	51,1	53,1	53,1	53,1
Primer Sezaryenin Tüm Doğumlar İçindeki Payı, (%)	-	26,3	27,2	26,4	25,7

Kaynak: Halk Sağlığı Genel Müdürlüğü

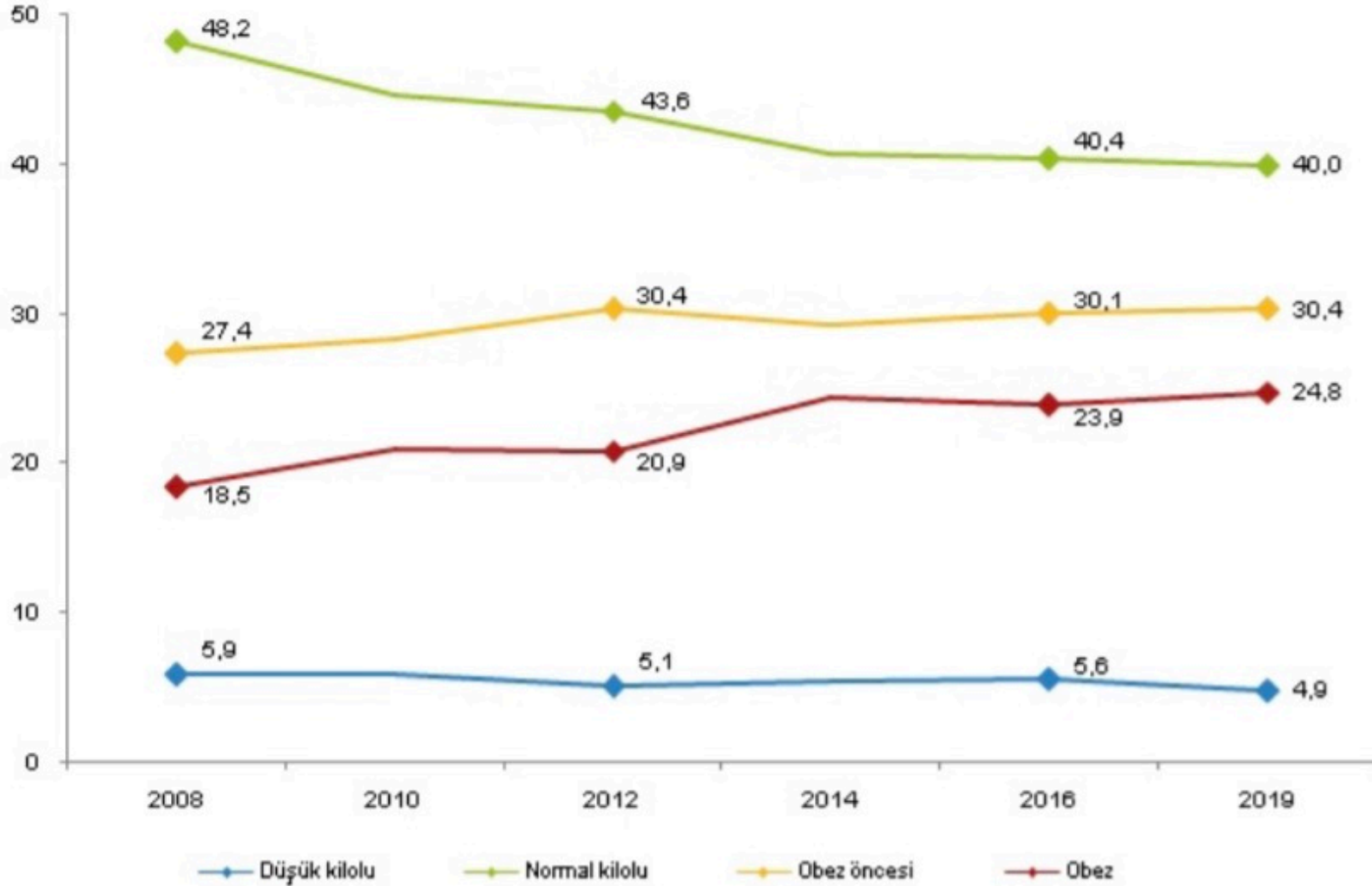
Şekil 5.11. Sezaryen Doğumların Tüm Doğumlar İçindeki Oranının Uluslararası Karşılaştırması, (%), 2016

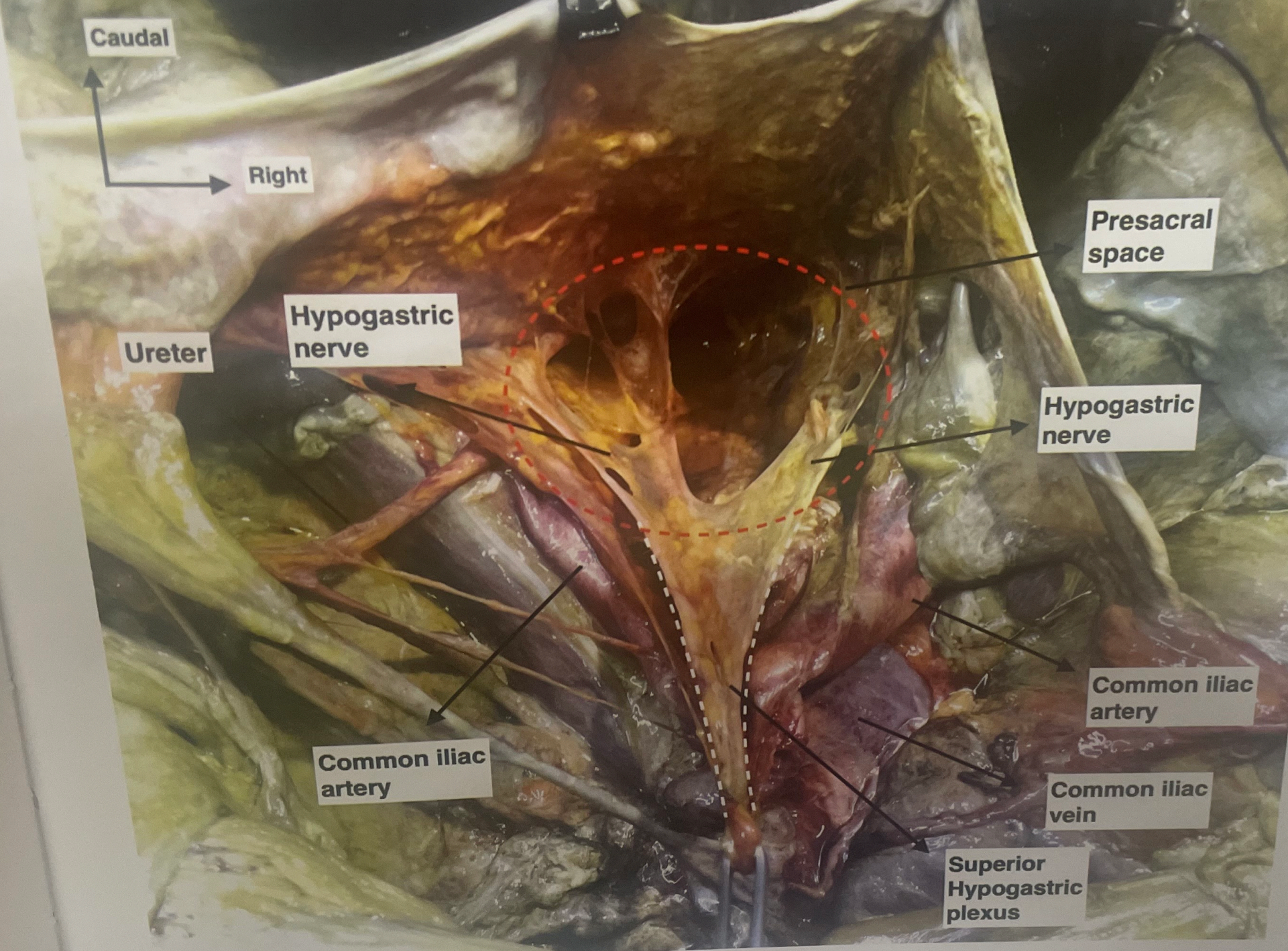


Kaynak: Halk Sağlığı Genel Müdürlüğü, EUROSTAT Veritabanı, OECD Health Data 2018, UNPD
Not: Türkiye verisi 2017 yılına aittir. Ülke verileri 2016 yılına veya en yakın yıla aittir.

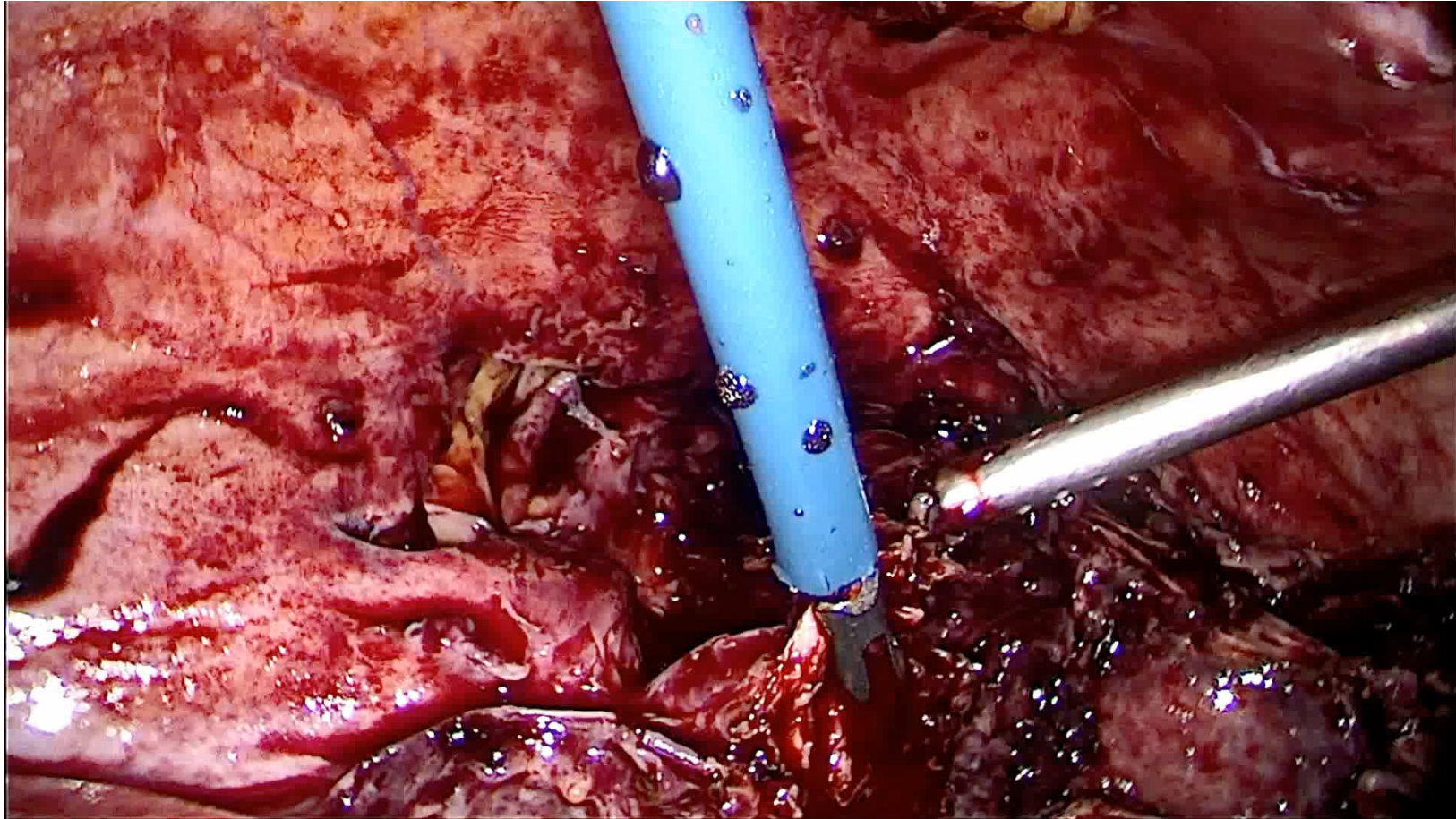
TÜİK 2019

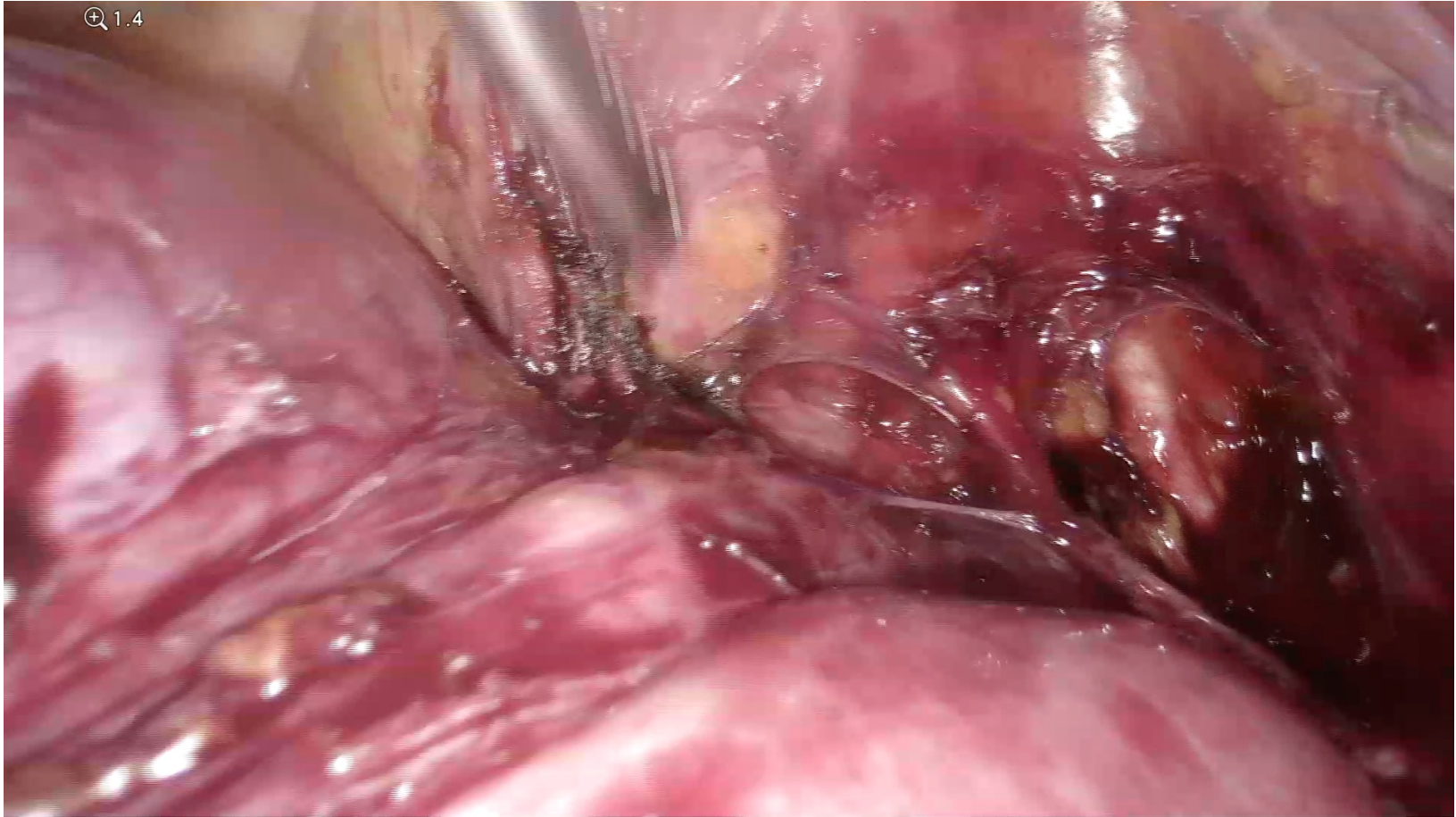
Kadınların vücut kitle indeksi dağılımı (%), 2008-2019



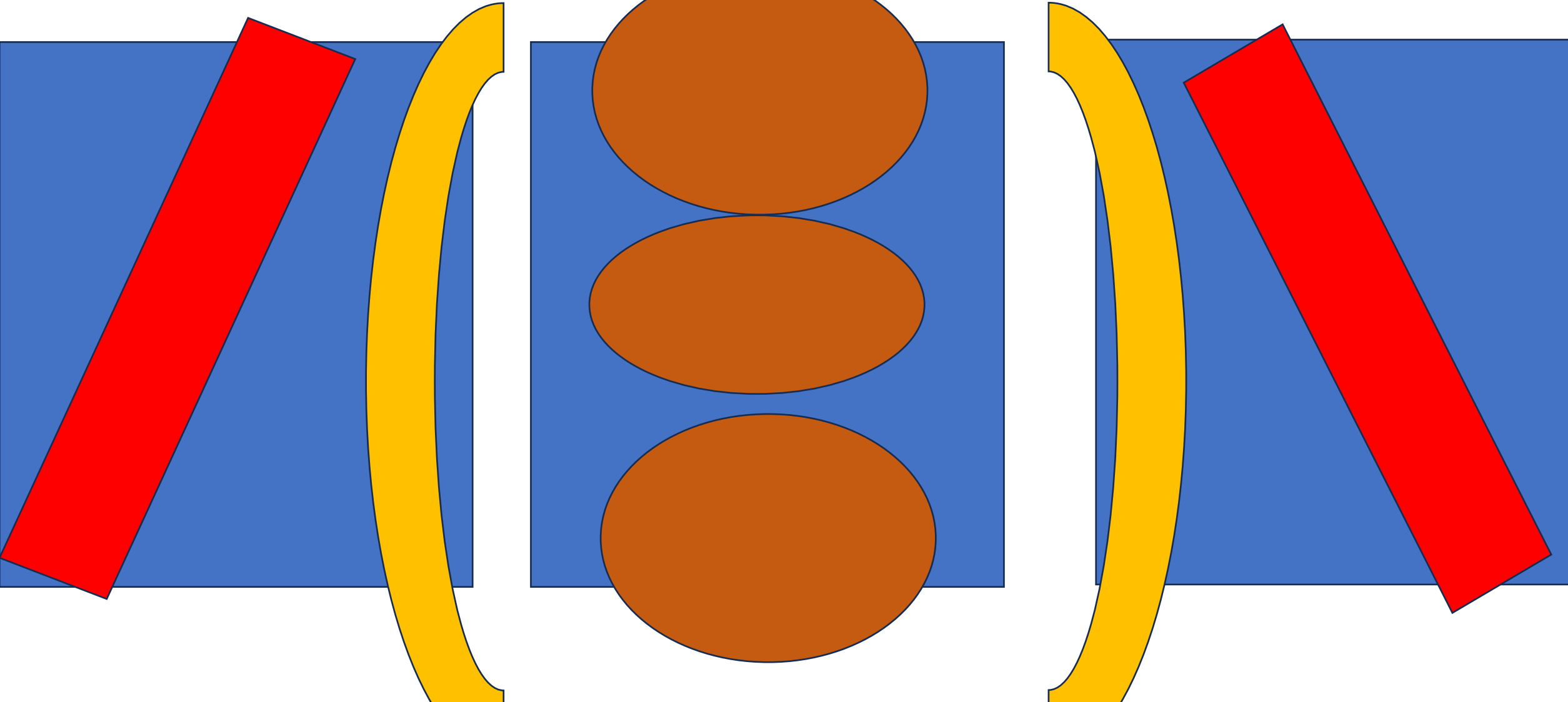


Presakral
sınırları
 (Figür 55, 5
 Anterior: Rectu
 Posterior: Sacru
 Lateral: Ureter,
 N. hypogastricu
 iliaca interna
 Inferior: M. levato
 M. coccygeus, co
 perineale (perine
 cisim)
 Superior: Sigmoid o
 mezenteri

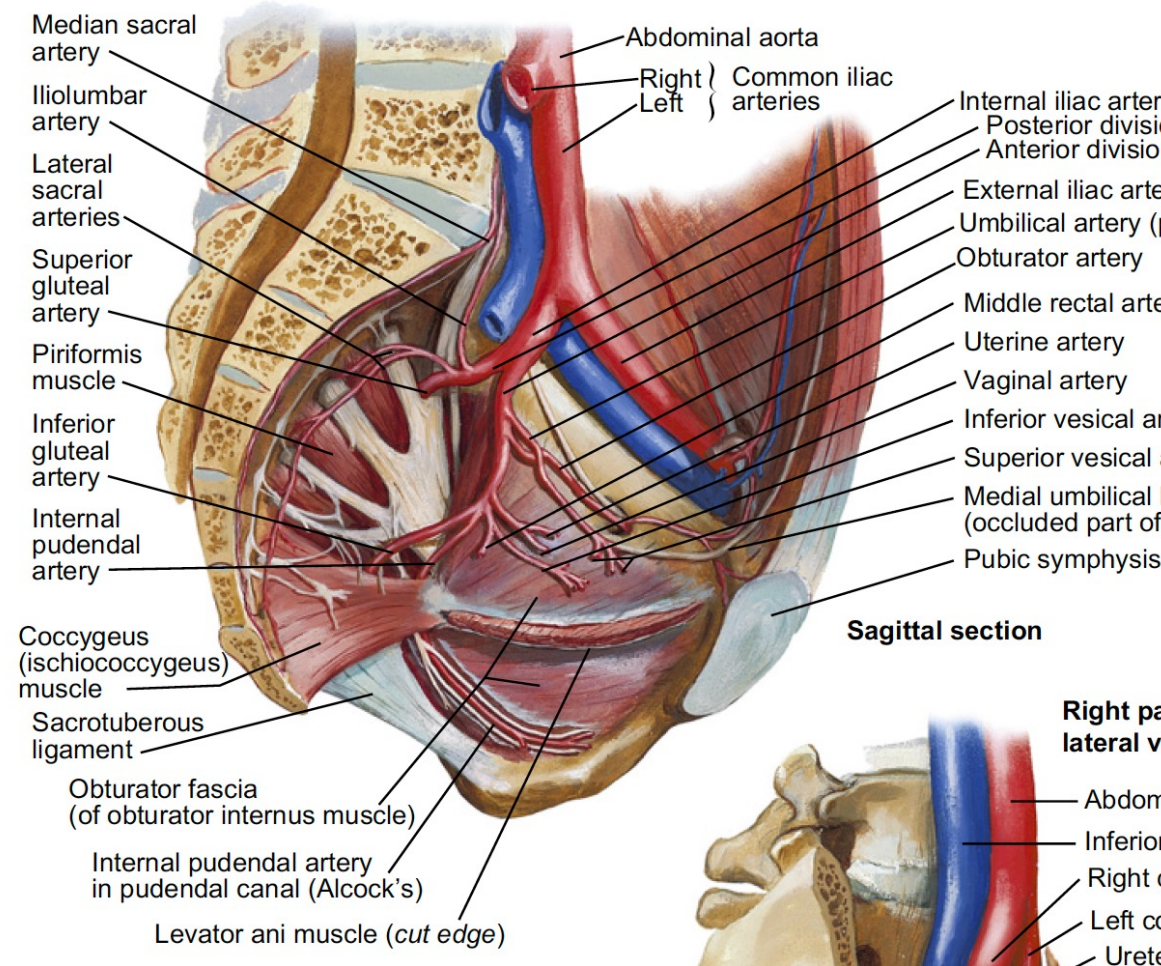
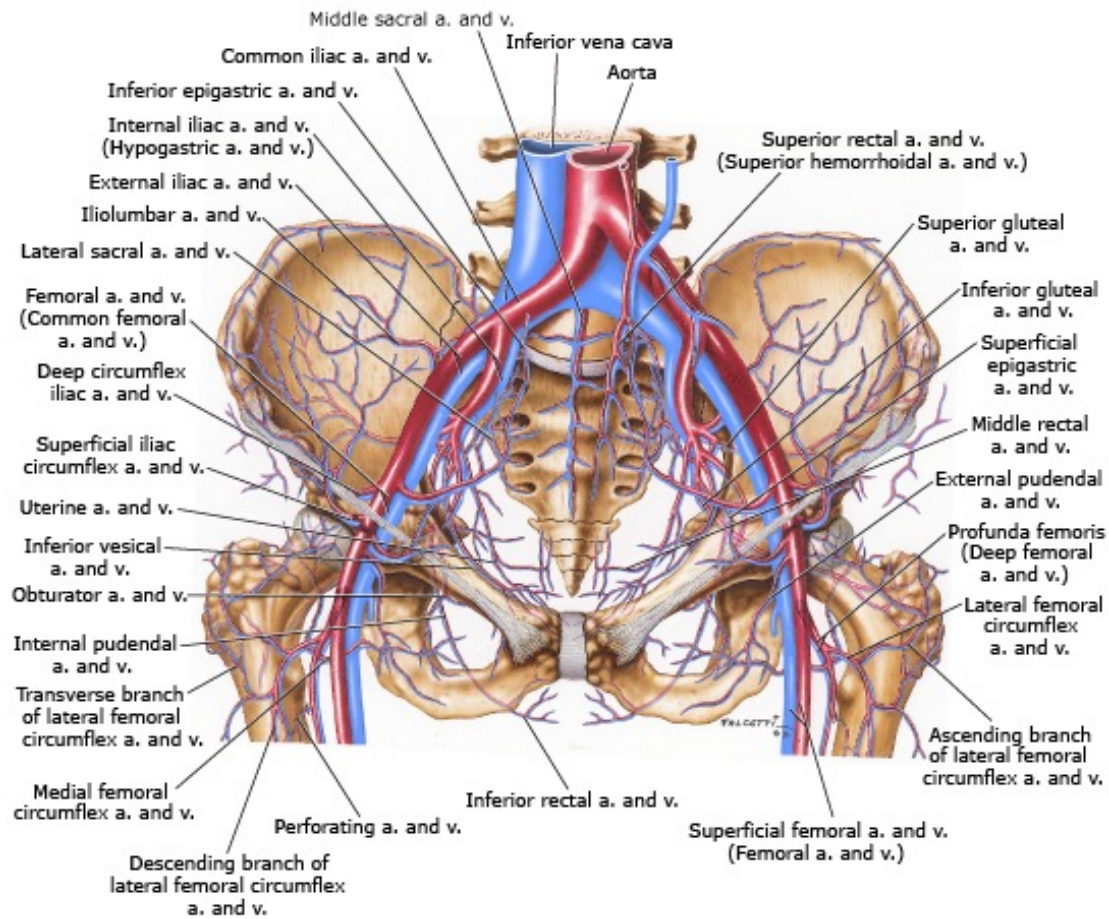




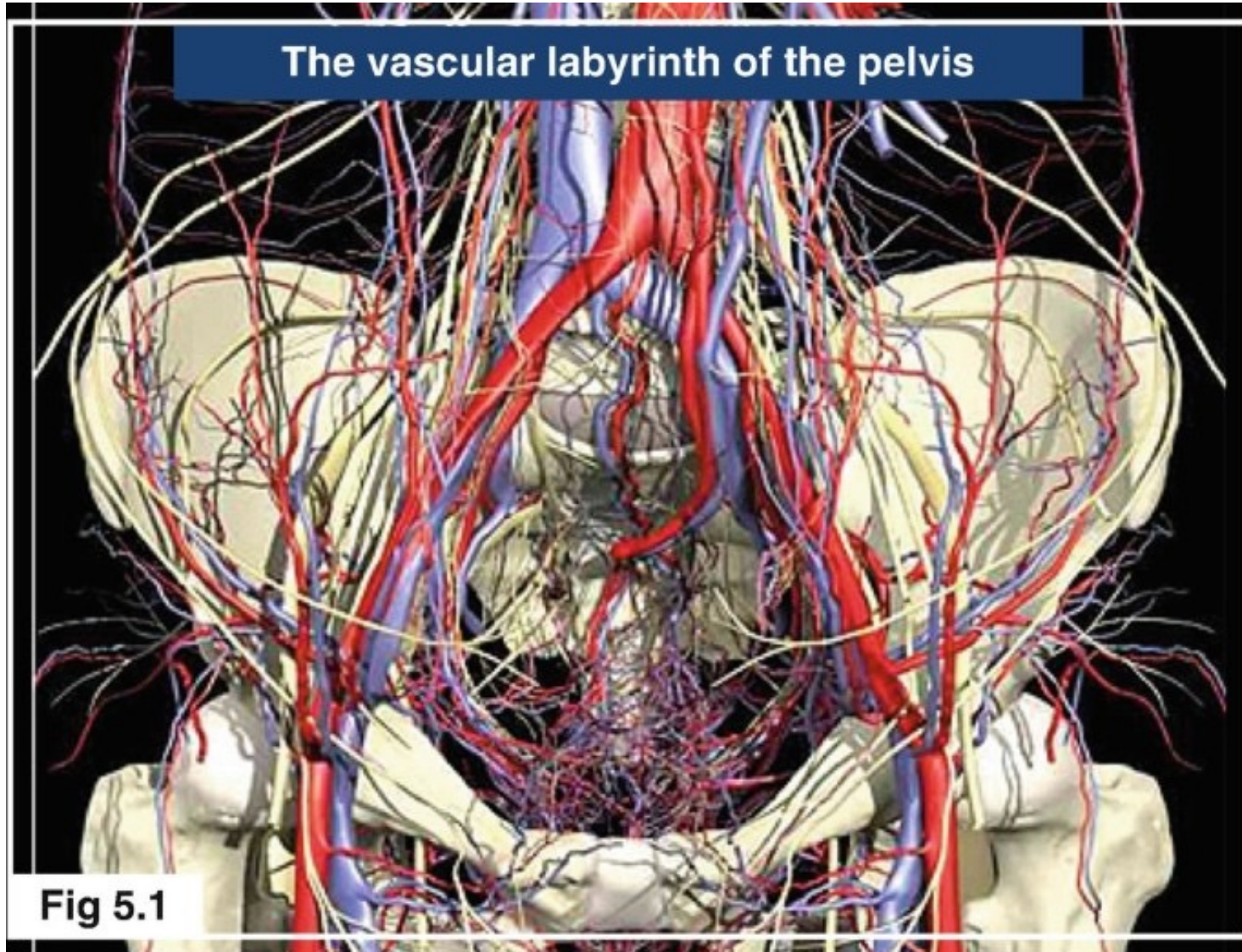
Three compartments



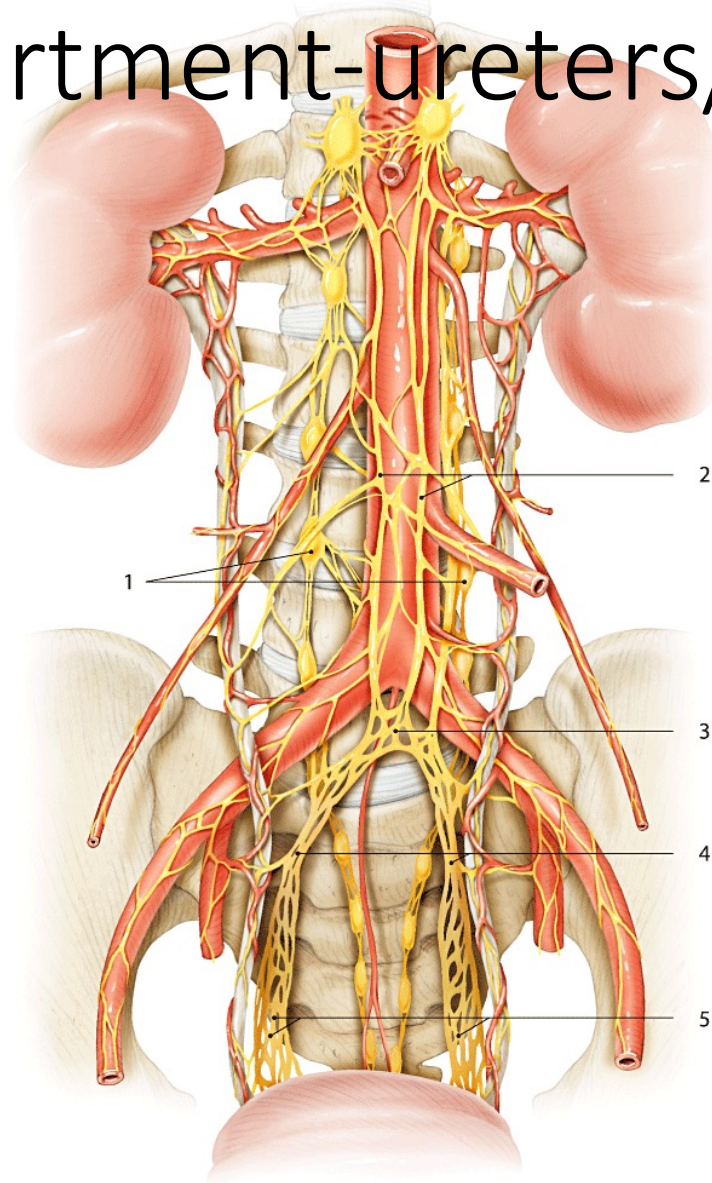
Lateral compartment-vessel network

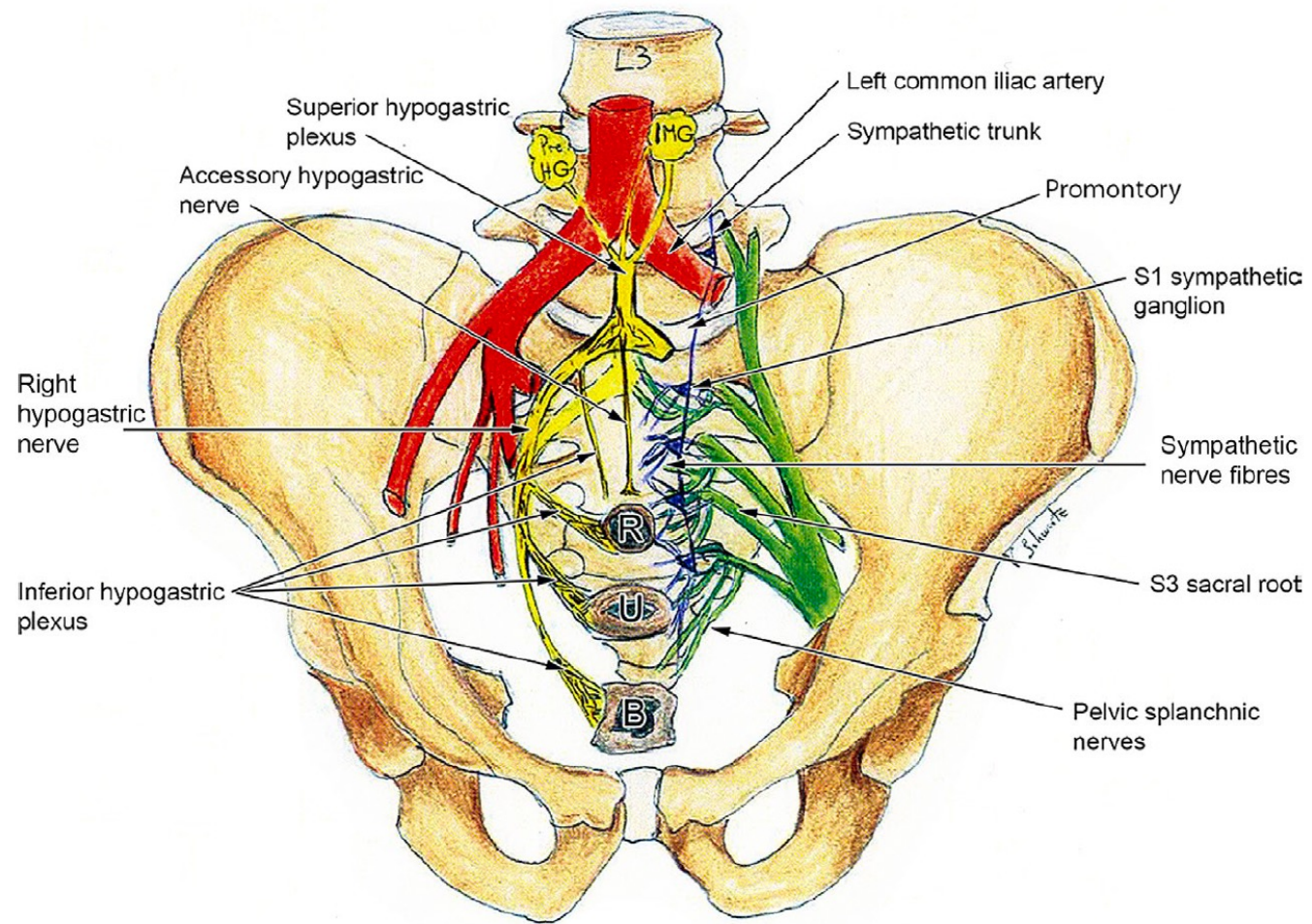


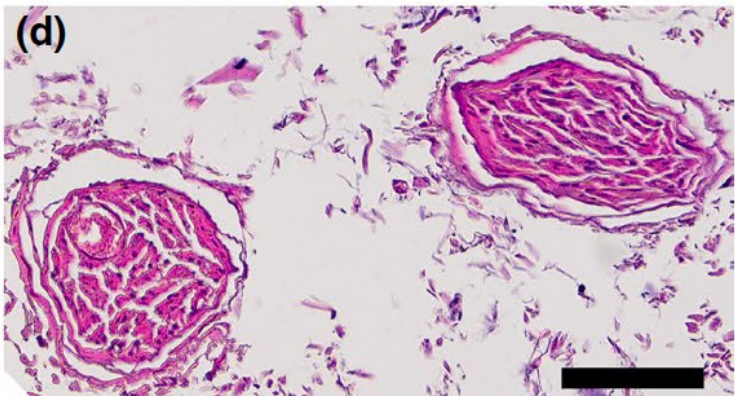
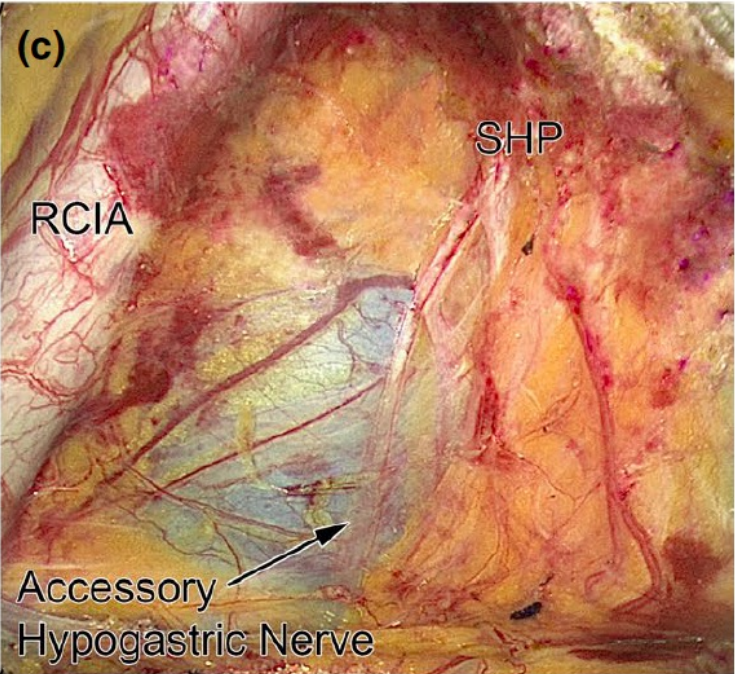
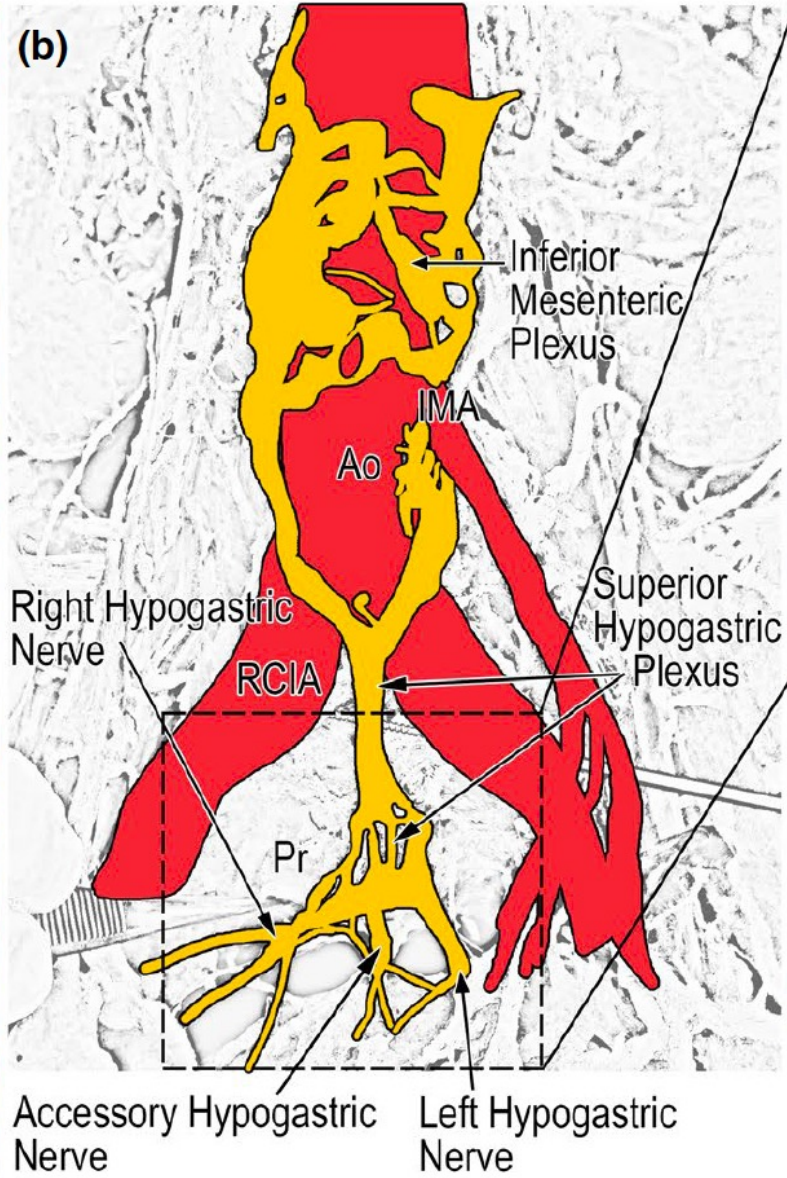
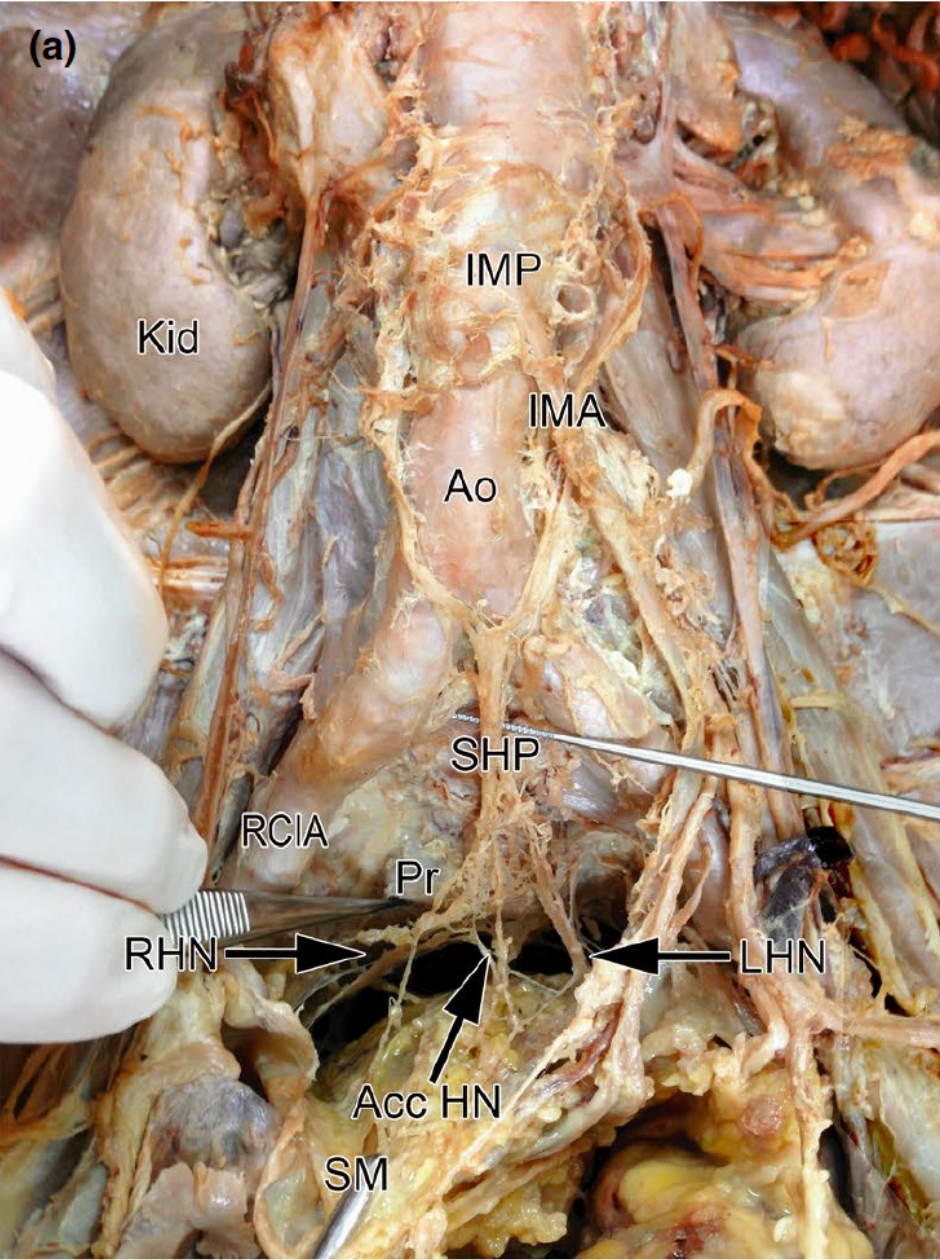
Vessel network

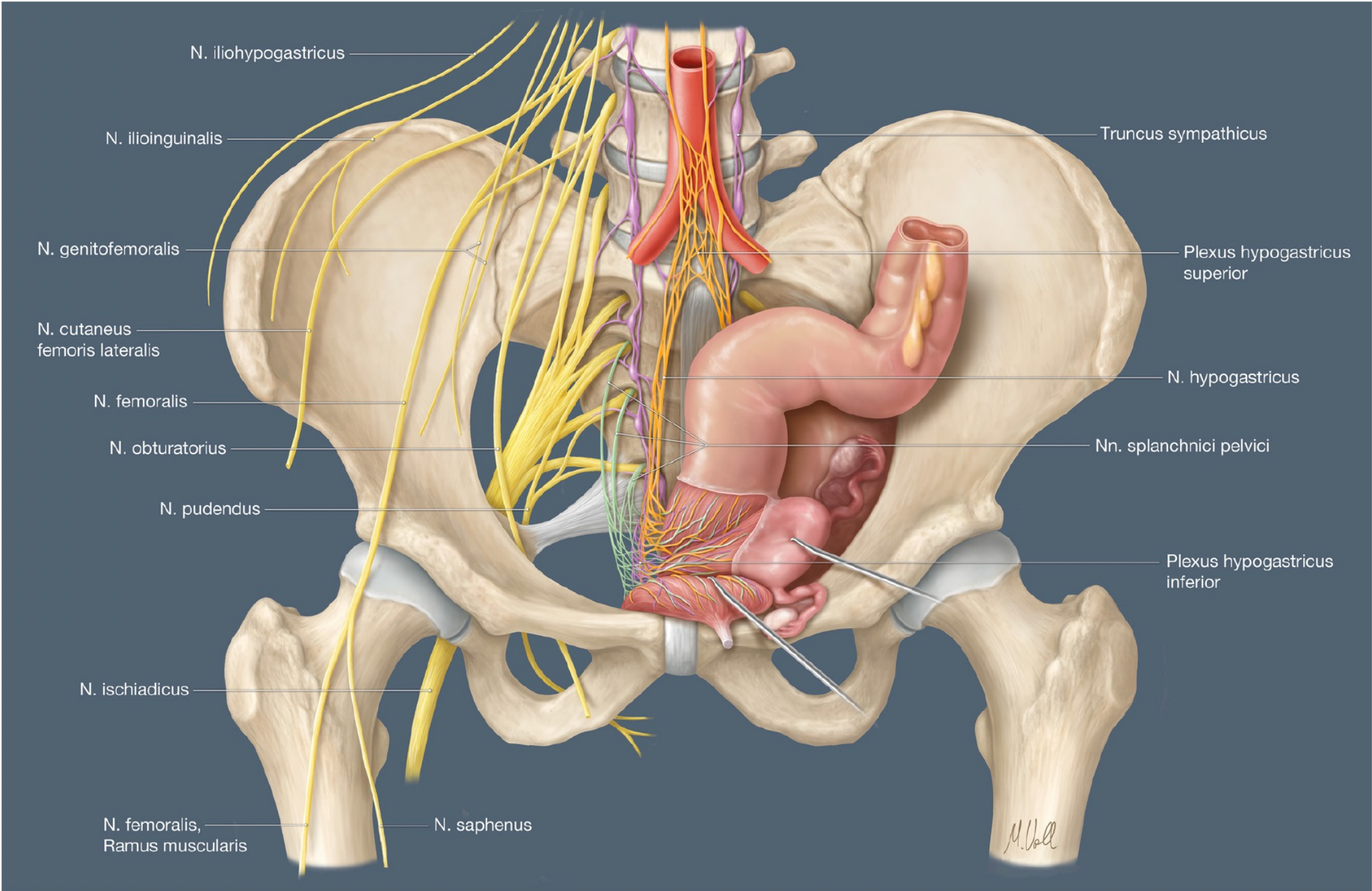


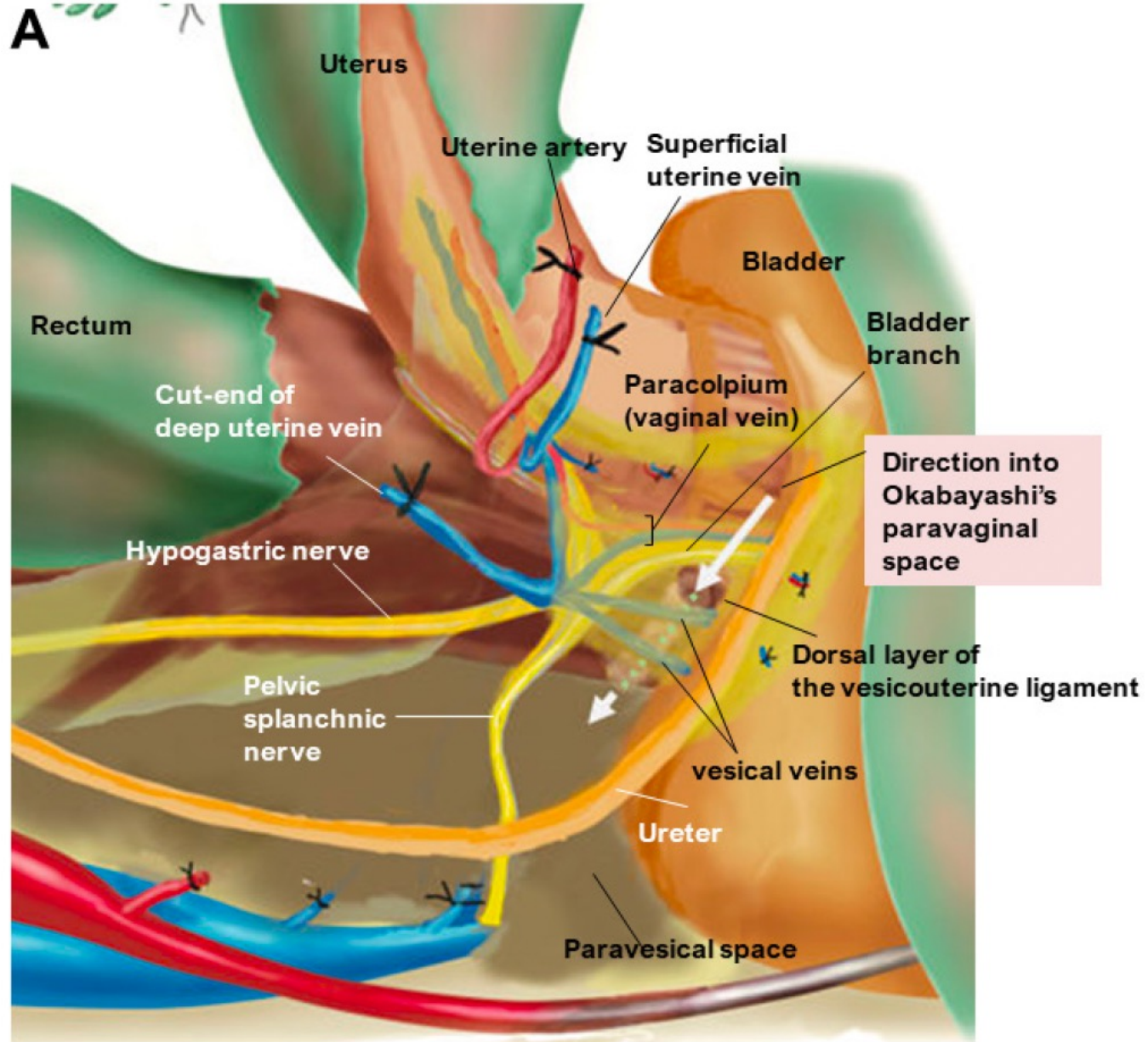
Medial compartment-ureters/nerves



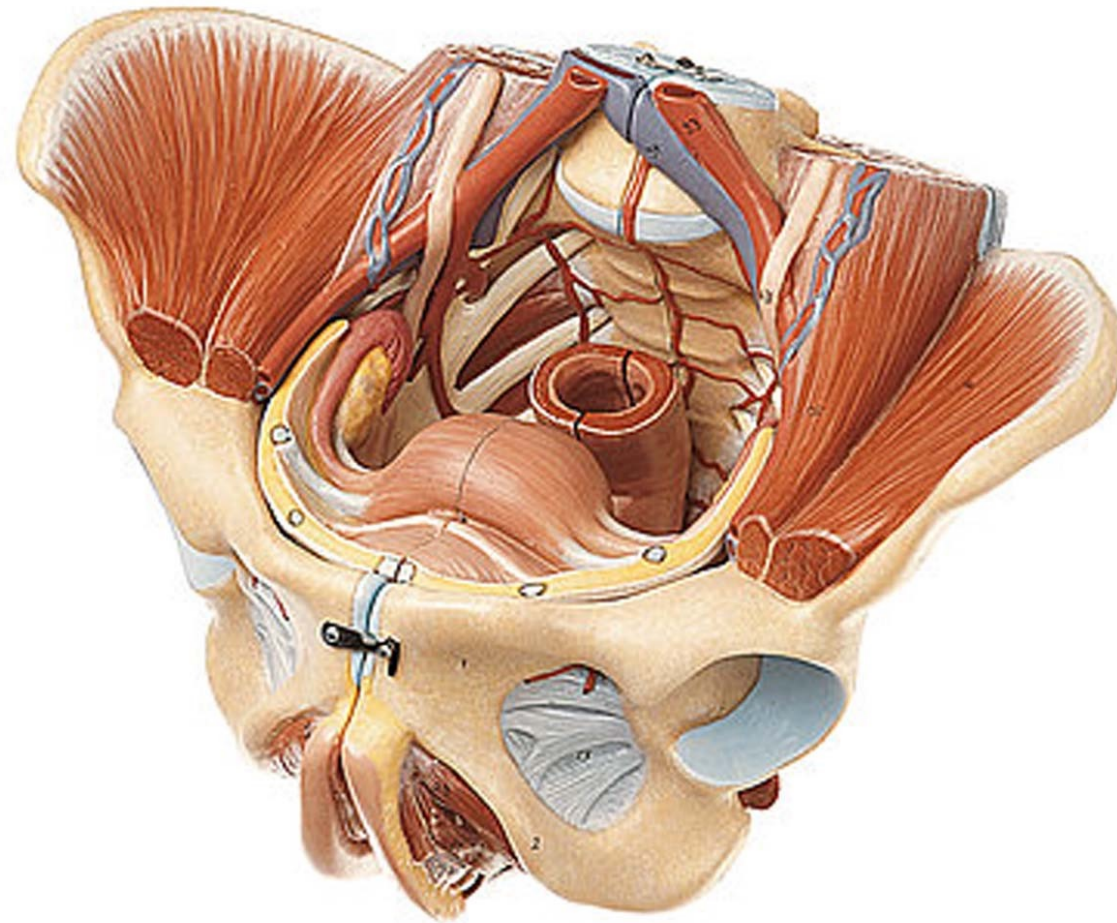




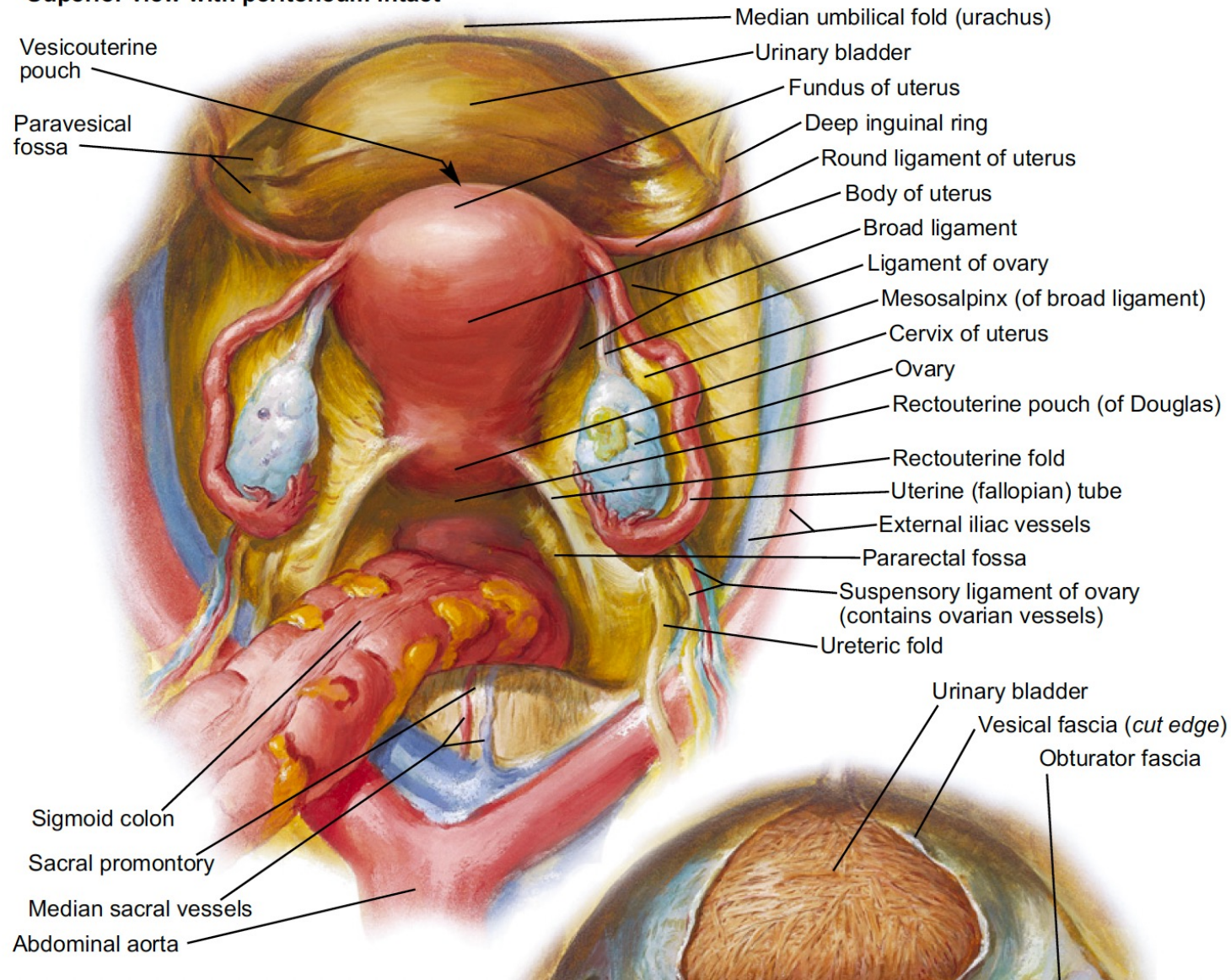


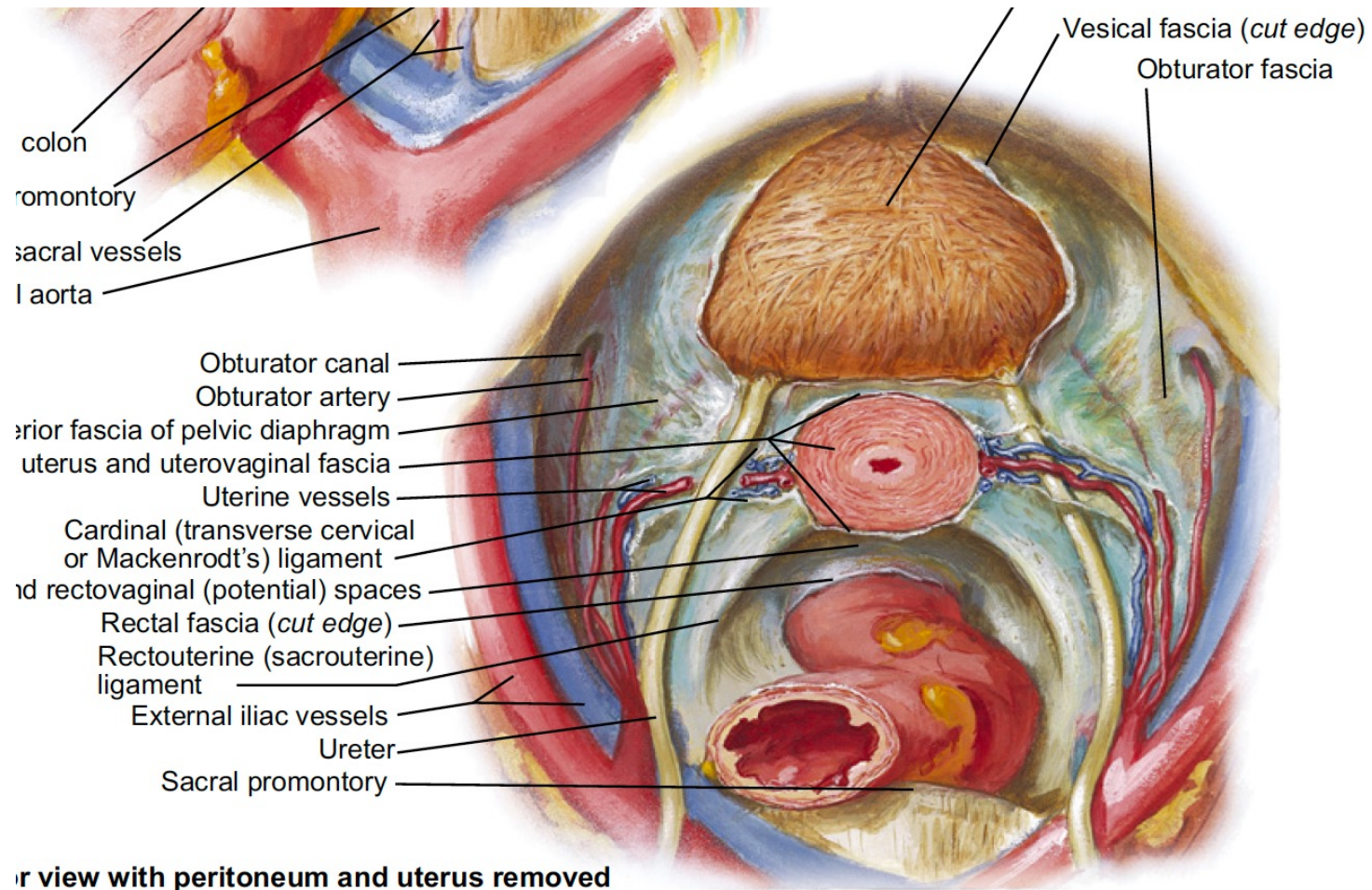


Mid compartment- visceral organs

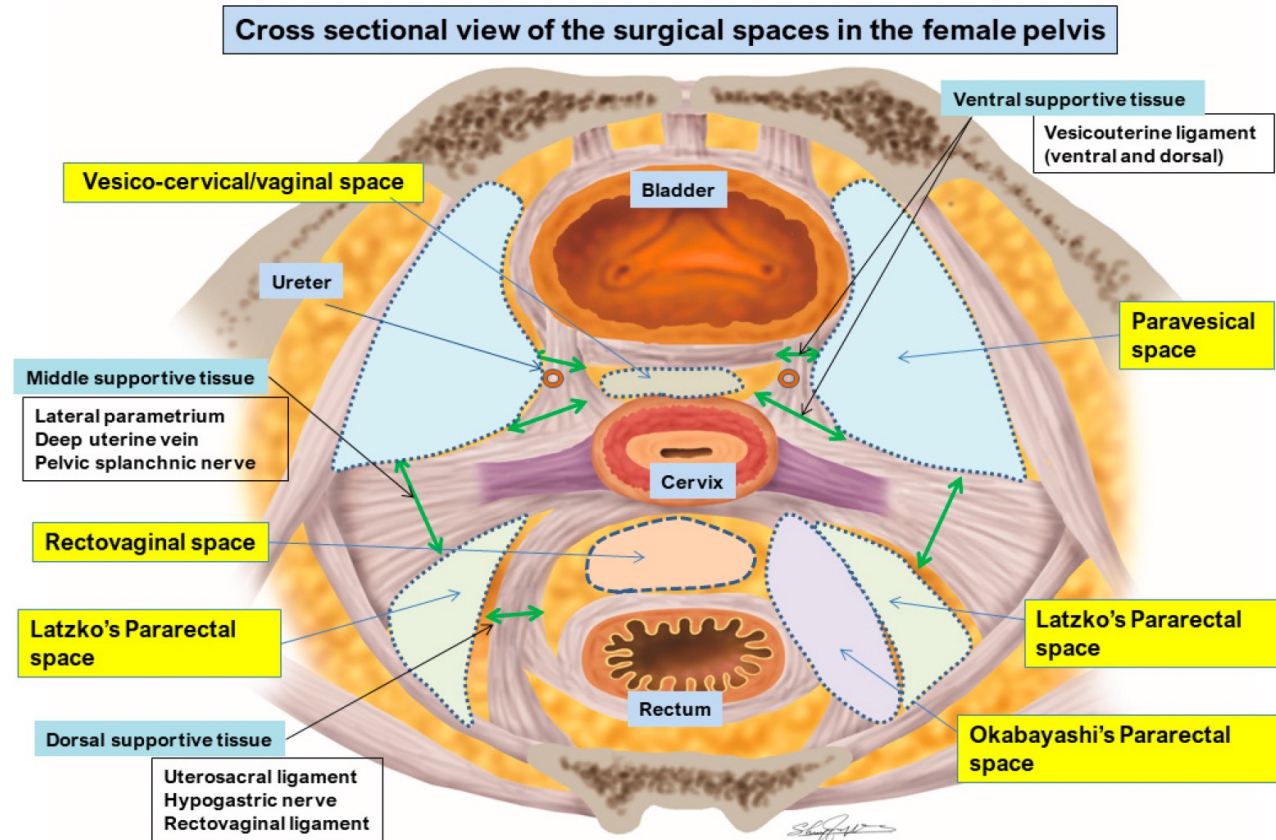


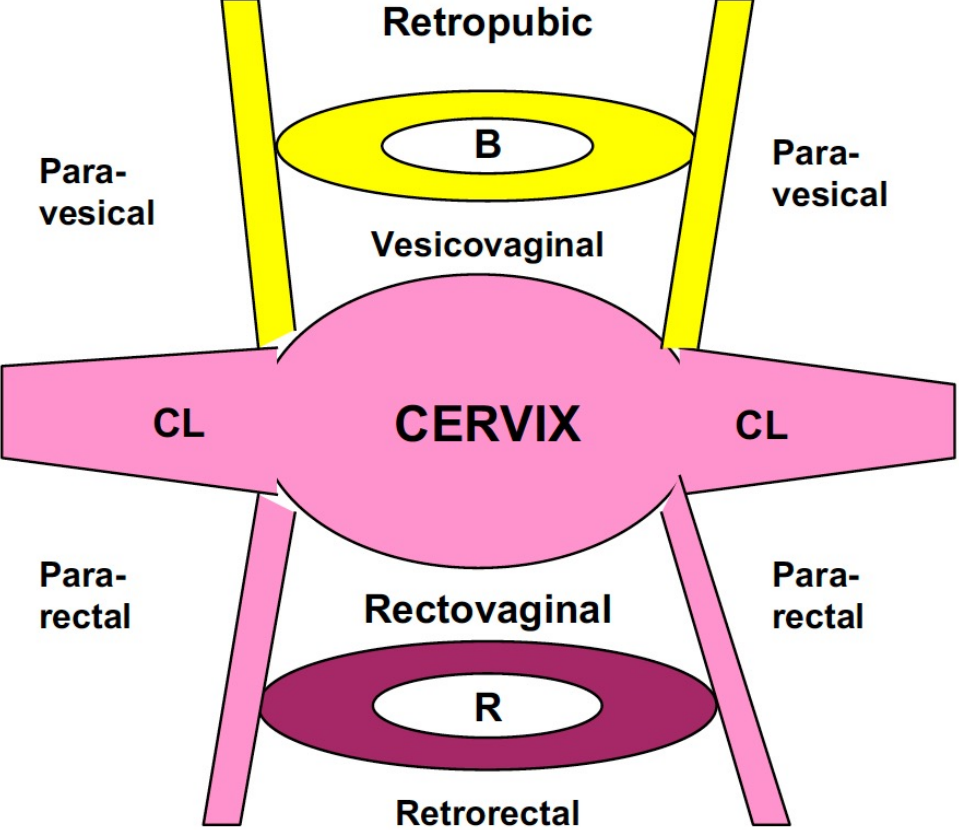
Superior view with peritoneum intact

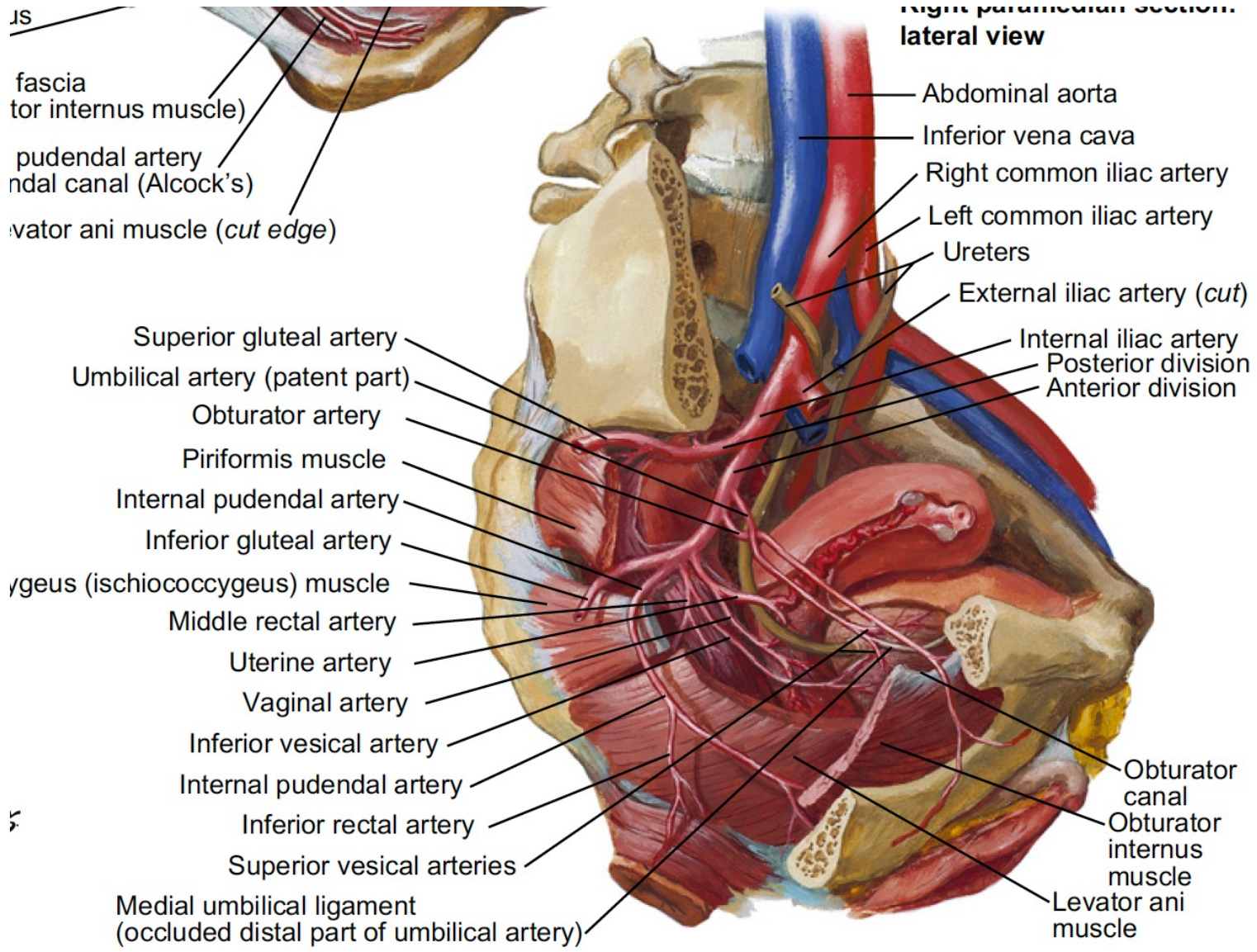




Pelvic avascular spaces







Box 1. Branches of the internal iliac artery (hypogastric artery)

Posterior division

Superior gluteal

Iliolumbar

Lateral sacral

Anterior division

Uterine

Vaginal

Superior vesical

Middle vesical

Inferior vesical

Middle rectal

Inferior rectal

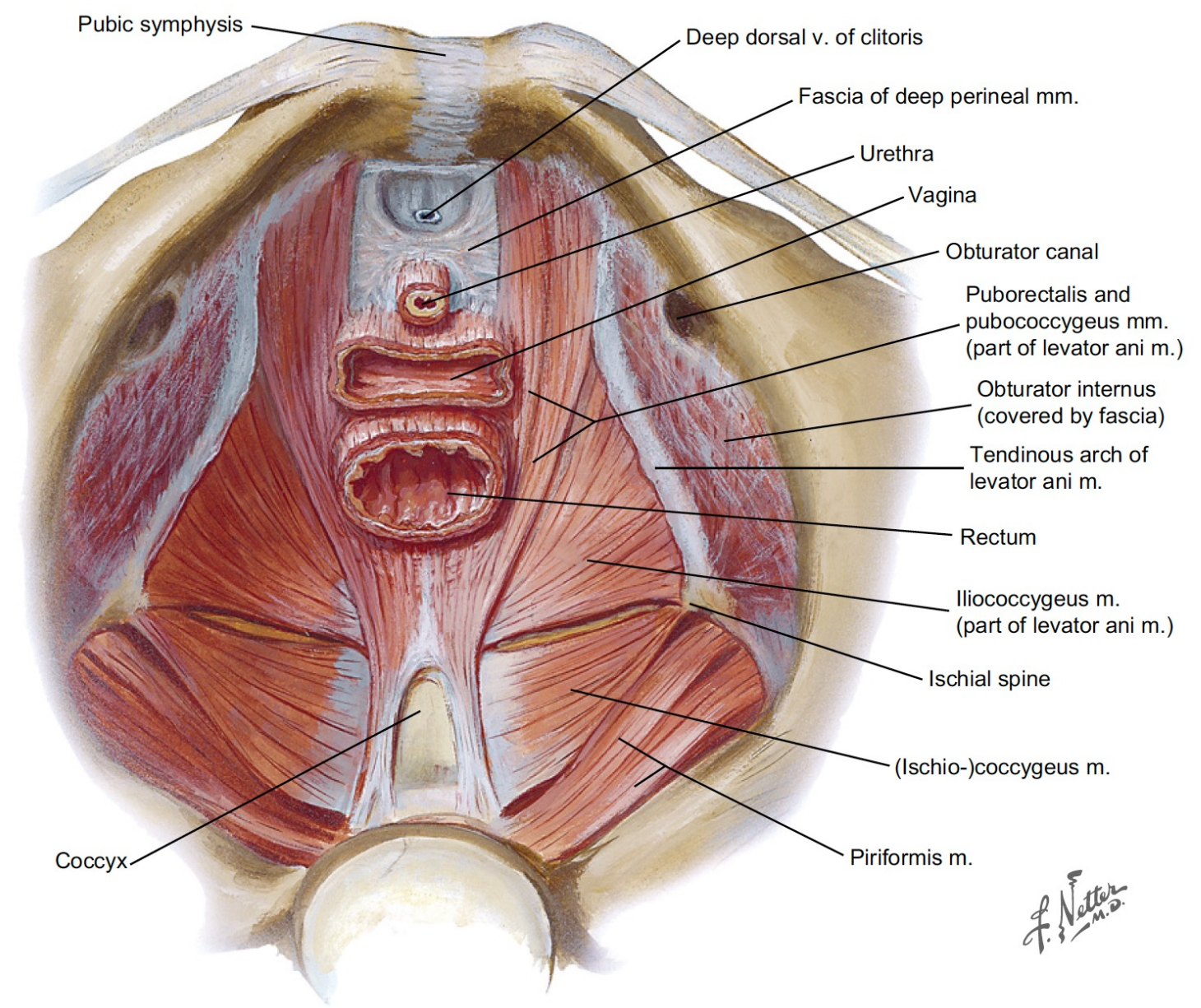
Obturator

Internal pudendal

Inferior gluteal

Obliterated umbilical

Superior view



Pubic symphysis

Deep dorsal v. of clitoris

Fascia of deep perineal mm.

Urethra

Vagina

Obturator canal

Puborectalis and
pubococcygeus mm.
(part of levator ani m.)

Obturator internus
(covered by fascia)

Tendinous arch of
levator ani m.

Rectum

Iliococcygeus m.
(part of levator ani m.)

Ischial spine

(Ischio-)coccygeus m.

Piriformis m.

Coccyx

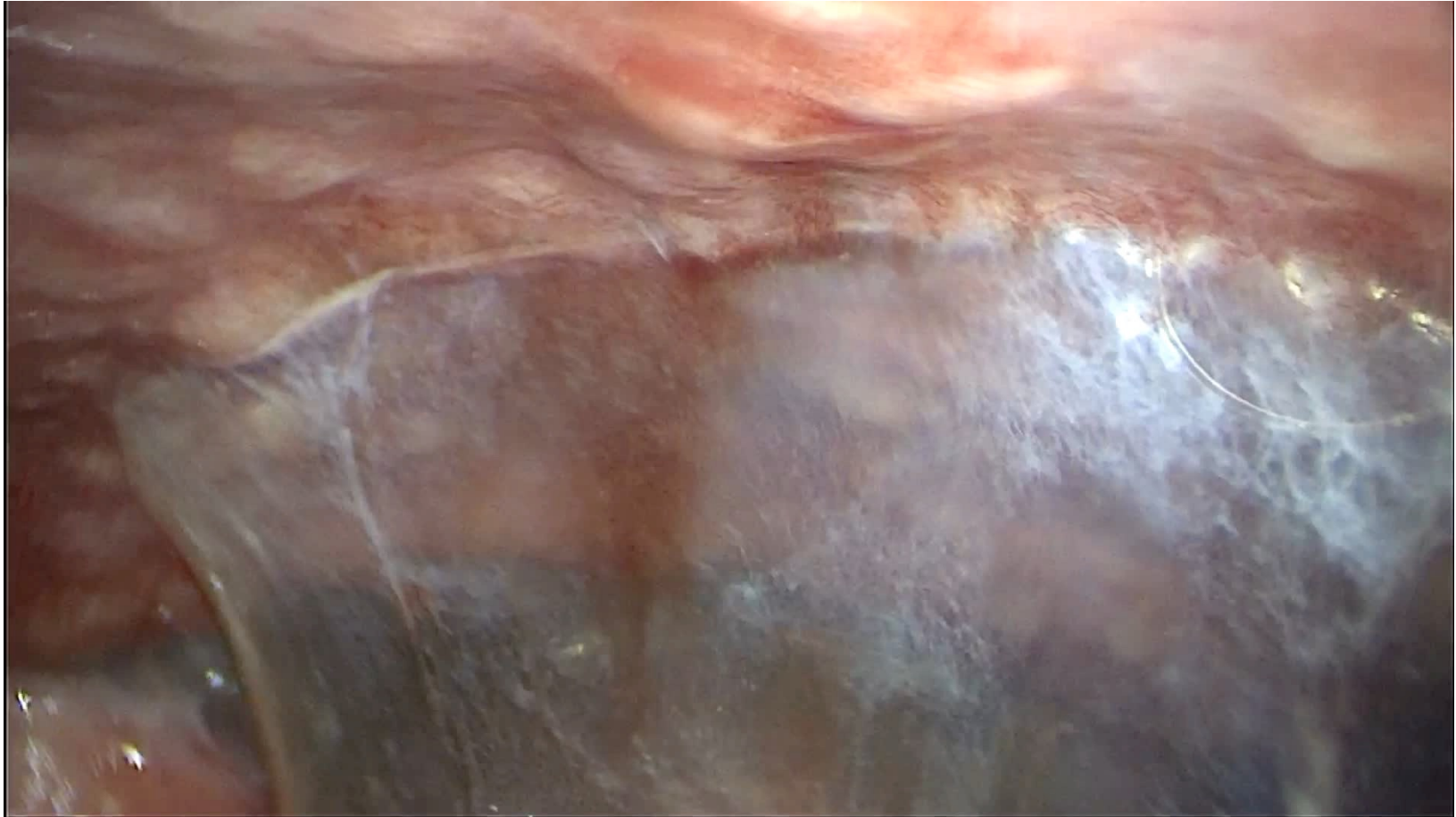
F. Netter M.D.

1.4



1.4

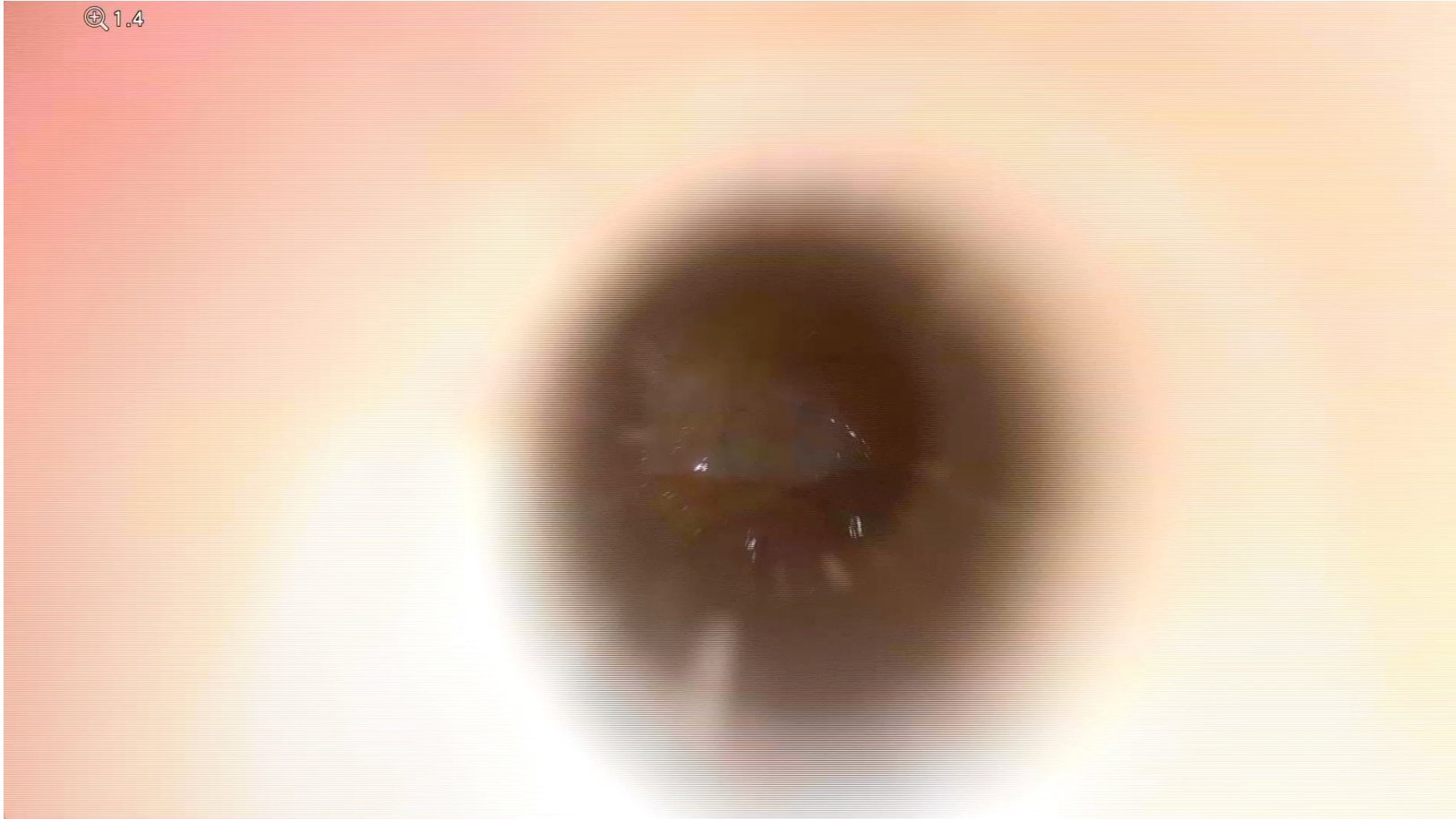


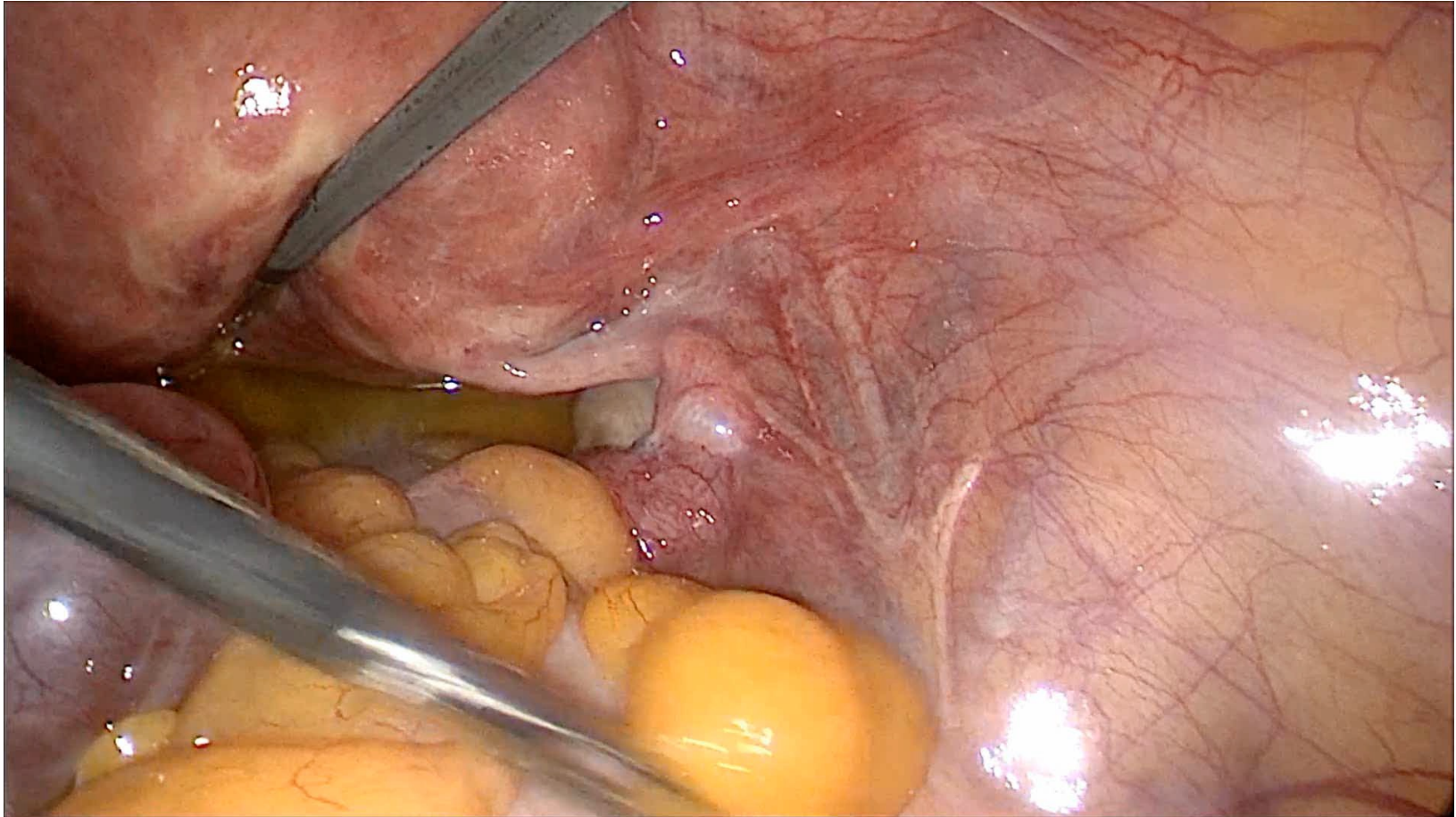




1.4

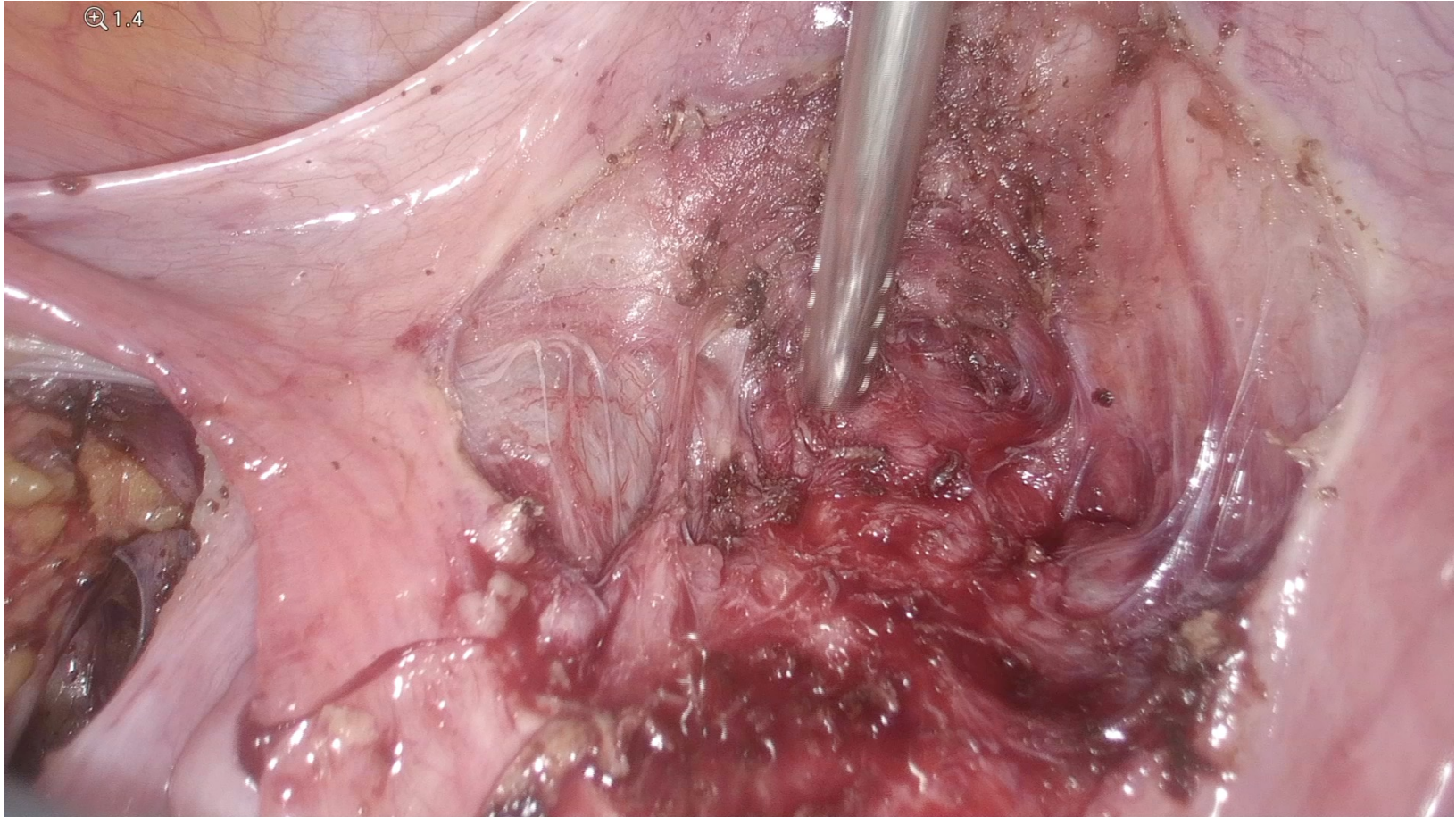
1.4

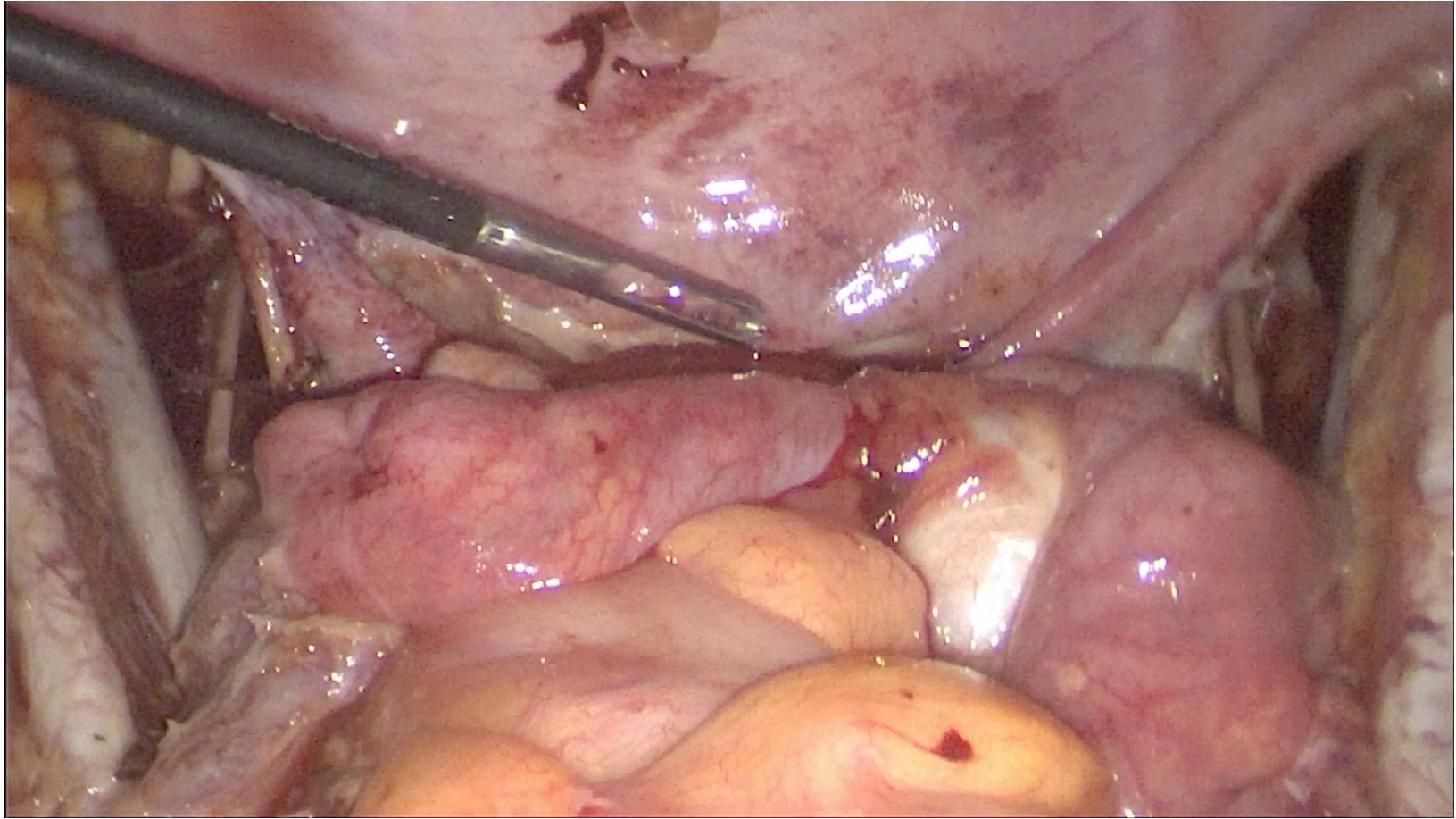


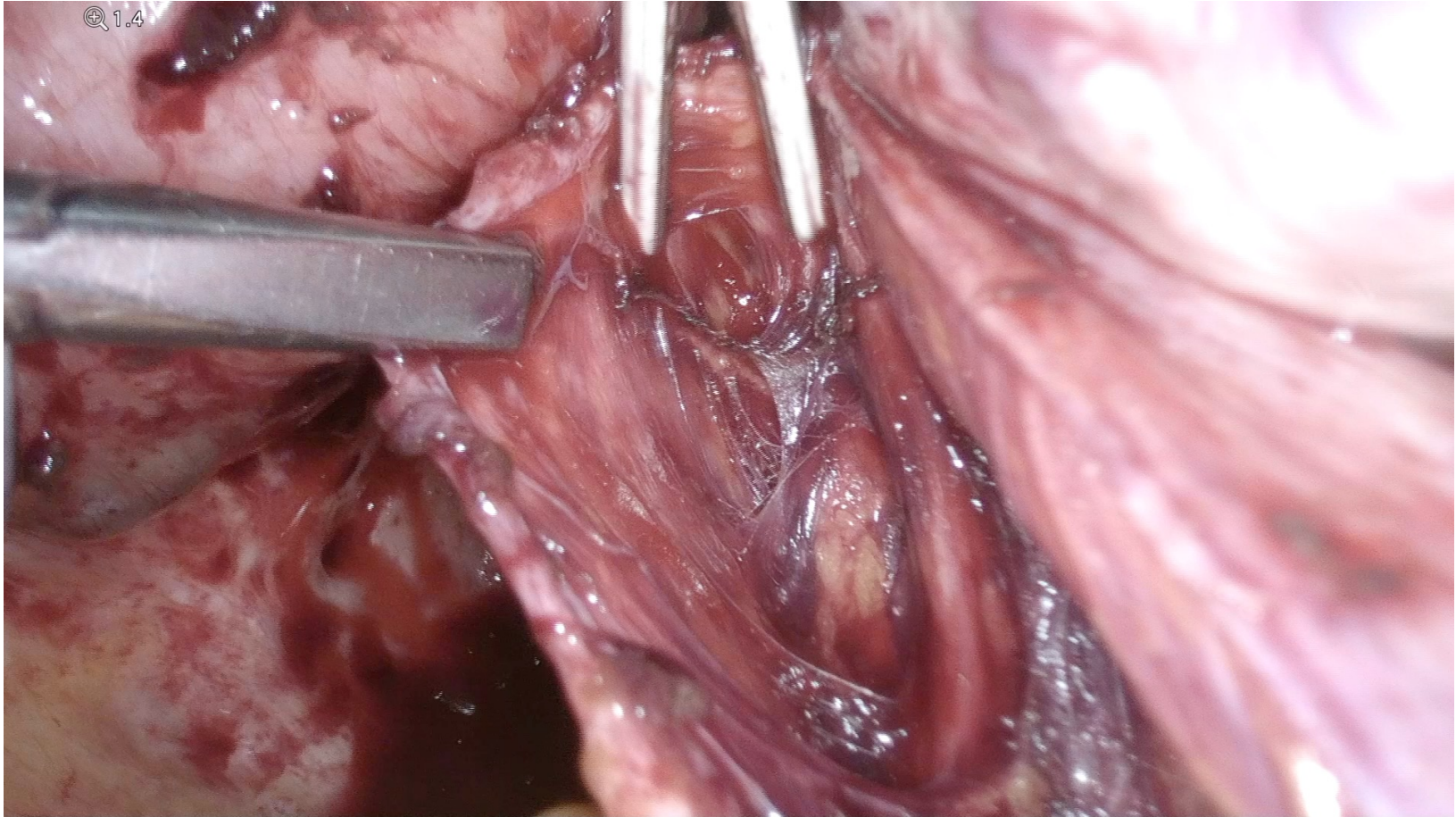


1.4









1.4



Sonuç

- **Anatomi bilgisi önemli**
- **Cerrahi anatomi klasik anatomiden farklı**
- **Varyasyonlar!**
- **Bozulmuş anatomi → kılavuz yapıların ortaya konmasıyla anatomi restorasyonu**

Sabrınız için teŖekkürler





1. Akdeniz Jinekoloji ve Obstetrik Kongresi

1st Mediterranean Obstetrics and
Gynecology Congress

15-17 EYLÜL 2023
SHERATON GRAND HOTEL, ADANA



KSDF 2024

KADIN SAĞLIĞI DERNEKLERİ
FEDERASYONU KONGRESİ

17-21 NİSAN 2024
Rixos Sungate, Antalya

