

JİNEKOLOJİK ENDOSKOPİ PLATFORMU



6. MİNİMAL İNVAZİV JİNEKOLOJİK CERRAHİ KONGRESİ

21-24 HAZİRAN 2023 | ACIBADEM ÜNİVERSİTESİ KONGRE MERKEZİ, ATAŞEHİR - İSTANBUL

Robotik Pelvik-Paraaortik Lenfadenektomi

Dr Ahmet Göçmen

Ataşehir International Medicana Hastanesi
İSTANBUL

gocmenahmet@yahoo.com

Jinekolojik Onkolojide Lenfadenektomi

- Bölgesel lenf nodlarının durumu jinekolojik kanserlerde en önemli prognostik faktördür ve erken evre kanserlerde lenf nodlarının değerlendirilmesi primer amaçtır.
- Erken evre jinekolojik kanserlerde lenfadenektominin diagnostik değeri iyi bilinmesine rağmen, terapötik etkisi tartışmalıdır.

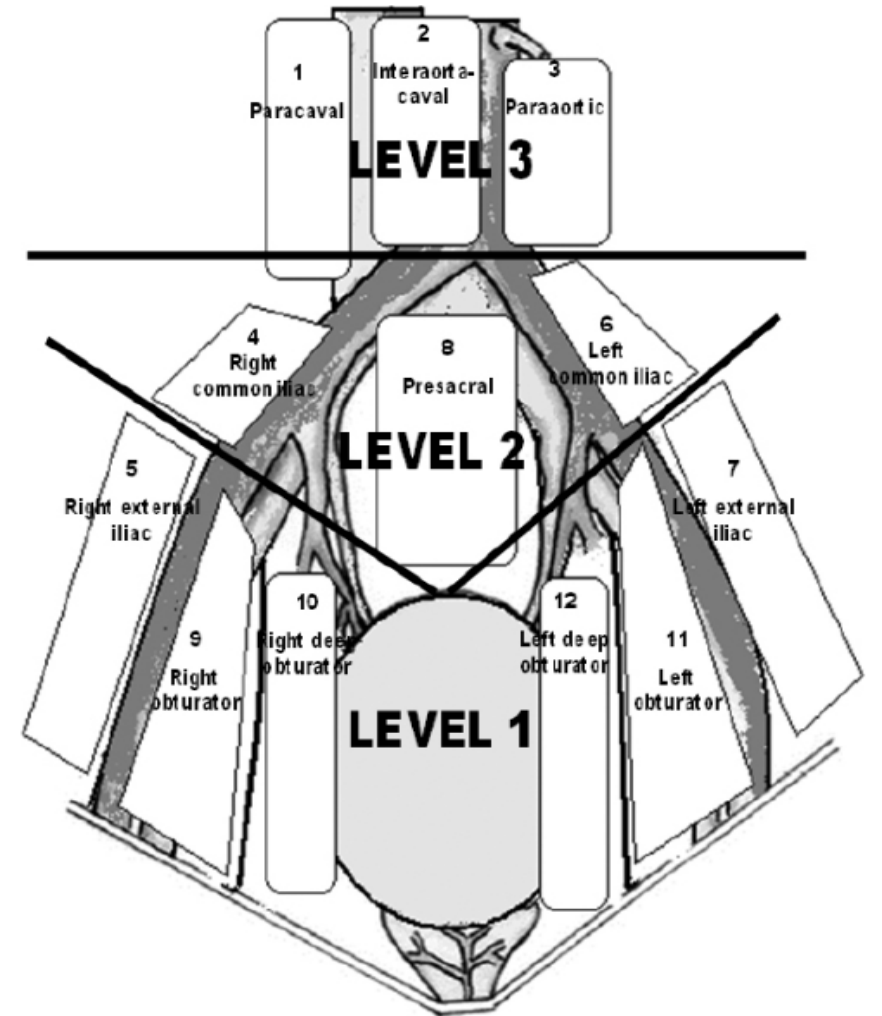
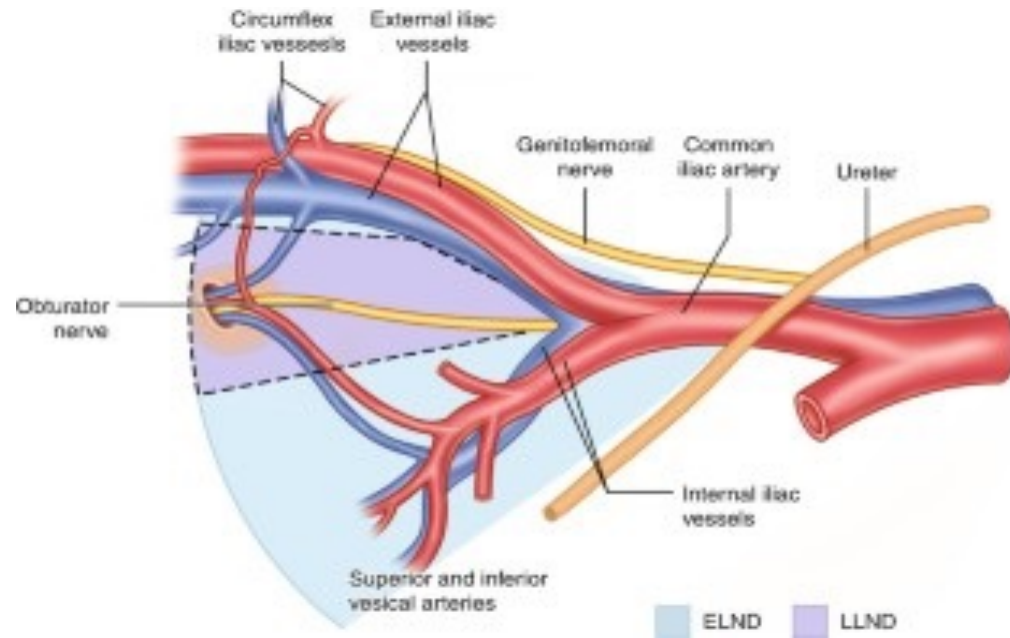
Lenf adenektominin amacı;

- Diagnostik /Staging
- Terapötik

Endometrial Ca
Ovarian Ca
Cervical Ca
Vulva-Vaginal Ca

Sistemik
Sentinel
Bulky LND

PELVİK LENF ADENEKTOMİNİN SINIRLARI



The borders of the pelvic lymph nodes are the genitofemoral nerve **laterally**, bifurcation of the common iliac artery **cranially**, the deep circumflex iliac vein **caudally**, the obturator nerve **inferiorly**, and the obliterated umbilical artery **medially**.

The Lymphatic Drainage Patterns of the Gynecologic Organs

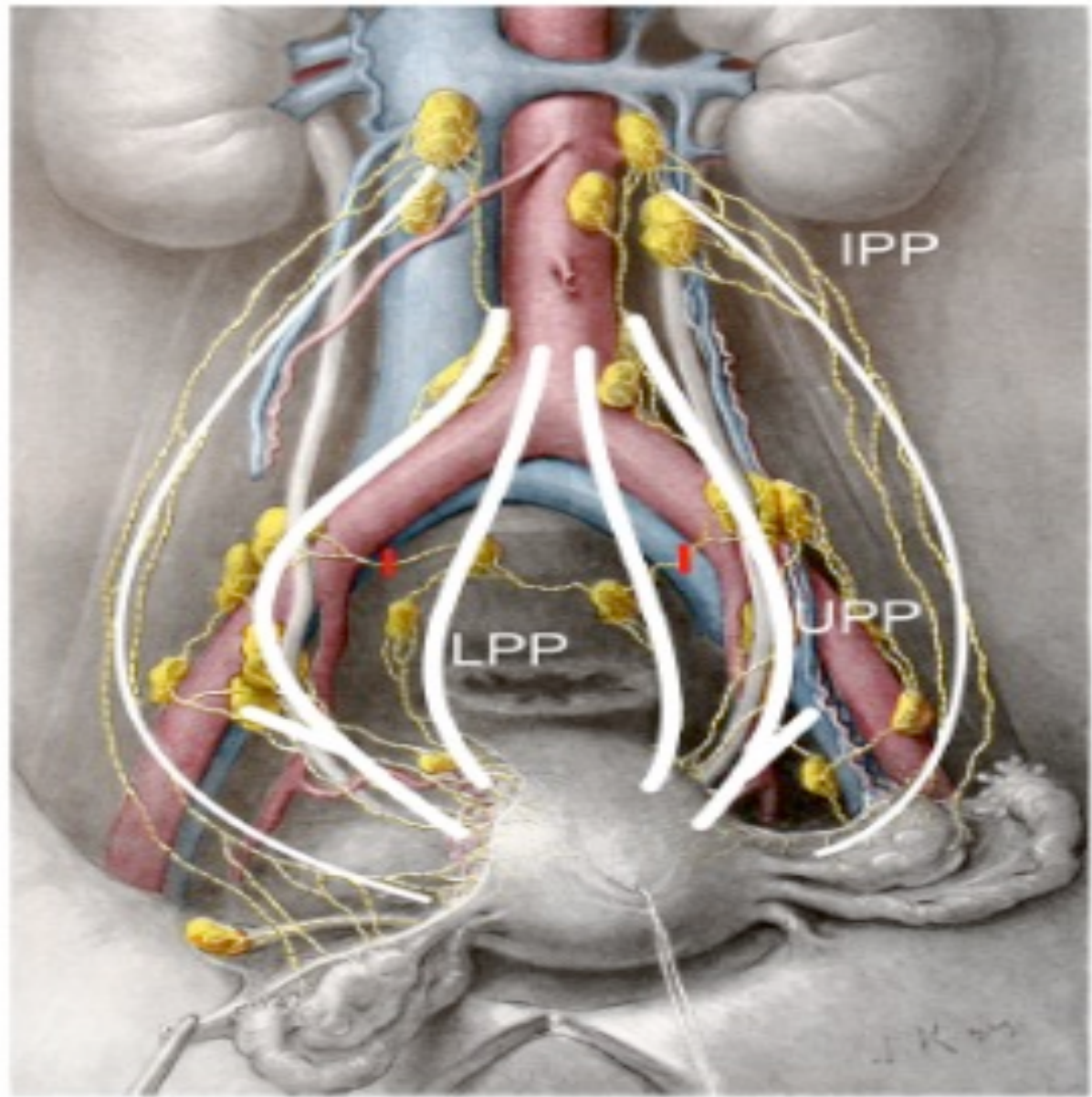
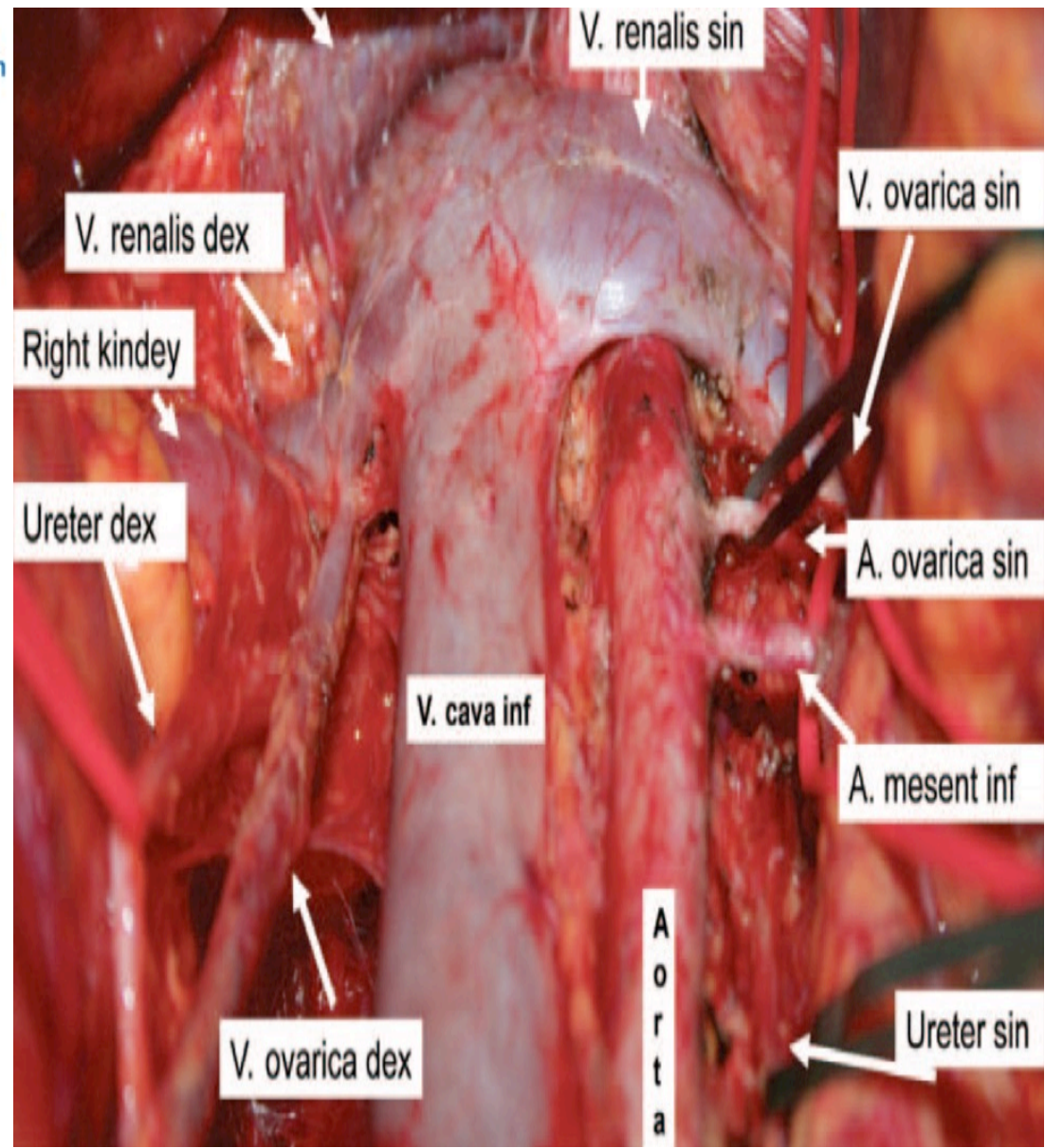
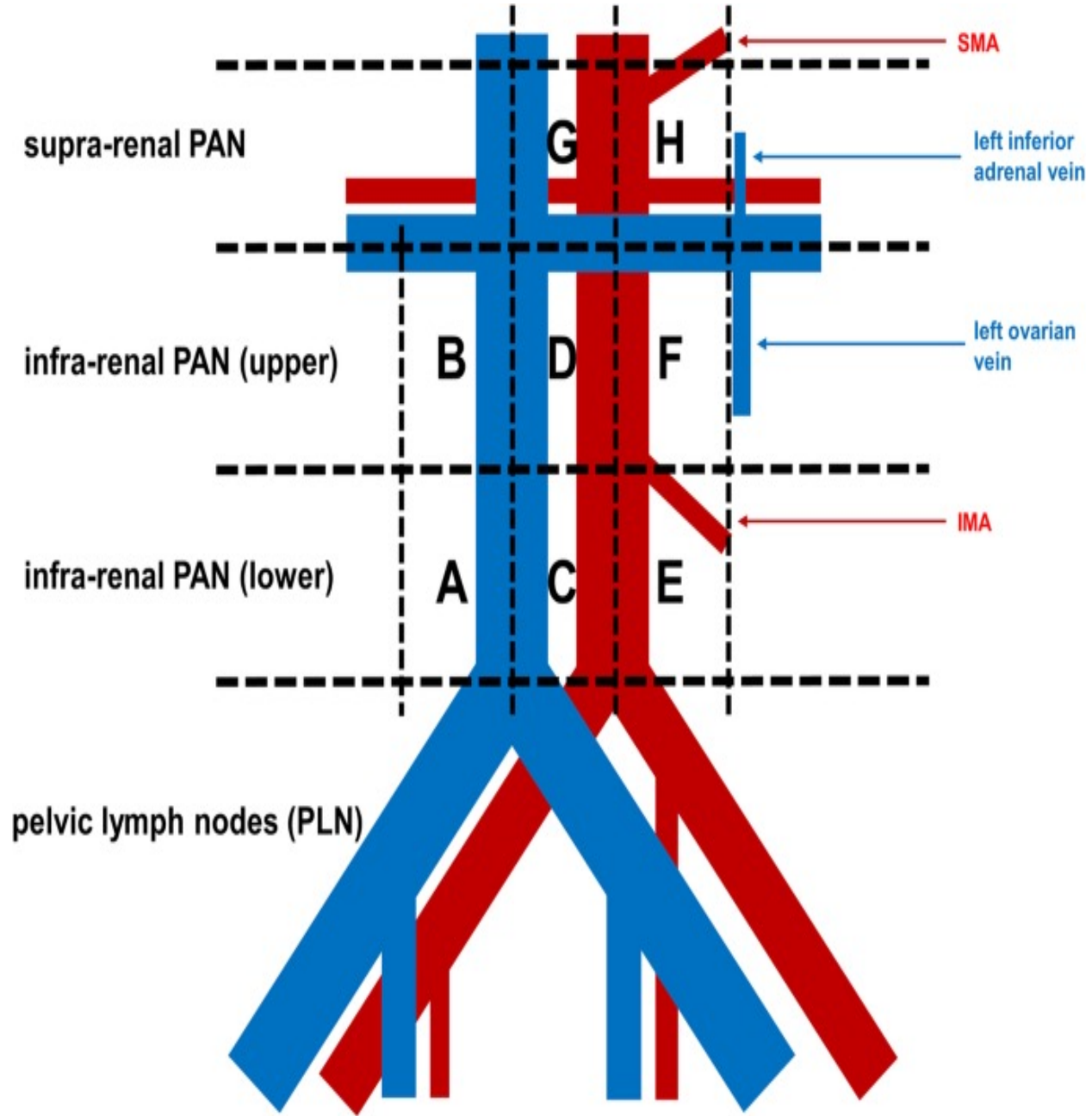


Fig. 2. Schematic overview of the uterine lymphatic pathways. UPP = upper paracervical pathway, LPP = lower paracervical pathway, IPP = Infundibulo-pelvic pathway. Modified after Döderlein and Krönig [40], 1912, by kind permission of Thieme publishers, Germany.





THE DISTANCE BETWEEN THE DIAFRAGM AND THE ORIGIN OF THE COLLATERAL BRANCHES OF THE ABDOMINAL AORTA

Bardas Anamaria¹, Bulbuc Ionut¹, Bordei Petru¹

Examination of the main branches of aorta abdominalis with multi-detector computed tomography angiography

Fatma Arslan¹, Keziban Karacan¹

Cukurova Med J 2020;45(4):1679-1689

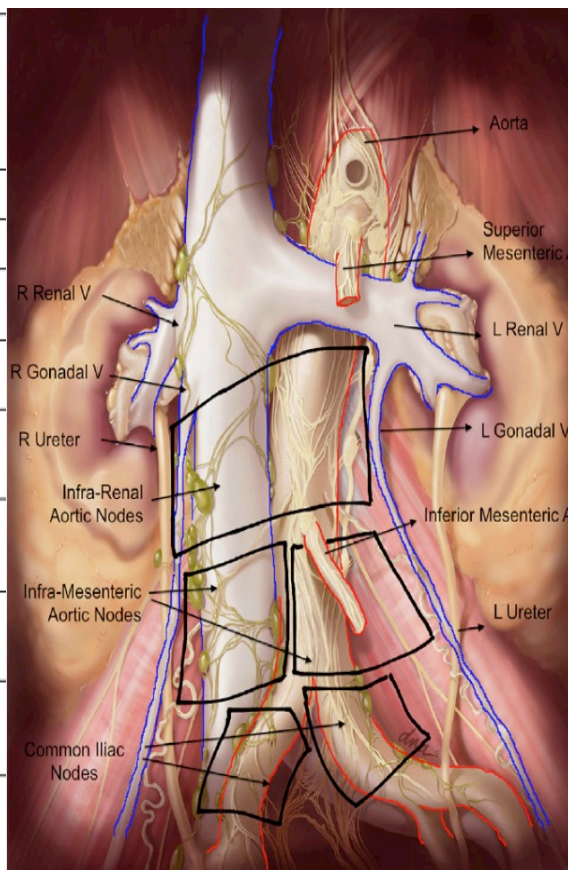
DOI: 10.17826/cumj.779550

The distance between the Renal artery and the aortic bifurcation 8,4-11.4 cm
 RA-IMA 5.2-5.6 cm
 IMA-Aortic bifurcation 4.7-5.2 cm

ARS Medica Tomitana - 2018;

Table 9. The comparison of distance measurements of AA main branches between each other according to the gender

Distance between arteries	Female(n=61) $\bar{x} \pm S$	Male(n=139) $\bar{x} \pm S$	Result
CT – SMA	14.45±4.57	15.35±4.26	p=0.098
CT – IMA	84.98±10.35	90.76±11.46	p=0.001*
CT – RRA	28.16±7.31	31.31 ±9.75	p=0.015*
CT-LRA	32.47±8.72	33.94±7.36	p=0.074
SMA-IMA	70.52±9.43	75.22±11.85	p=0.002*
SMA-RRA	13.54±5.78	16.07±8.97	p=0.046*
SMA-LRA	17.77±6.93	19.00±7.56	p=0.225
IMA-RRA	56.37±9.32	59.51±12.88	p=0.011*
IMA-LRA	51.65±8.98	56.61±12.00	p =0.002*



*p<0.05, ** Mann-Whitney U test, *** Coeliac trunk (CT), superior mesenteric artery (SMA), right renal artery (RRA), left renal artery (LRA), inferior mesenteric artery (IMA)

Transperitoneal Paraaortik Lenfadenektomi Basamakları

Sağ Paraaortik LA

1. Sağ üreterin CIA seviyesinde tesbiti
2. C İliak ve aort üzerindeki peritonun duodonuma kadar diseksiyonu
3. Sol renal venin tesbiti
4. Peritonun traksiyonu
5. Sağ üreterin lateralize edilmesi
6. Sağ caval-aortacaval-aortik LND

Dikkat; Fellow ven-Ovarian- Polar arter

Sol Paraaortik LA

1. Sol renal ven
2. IMA belirlenmesi
3. IMA altı üreter ve ovarian venin belirlenmesi
4. Alt Paraaortik LND
5. IMA üstü
6. Üst paraaortik LND



